

Tonight

- Last of the major scales – play as group – no slides or handouts
- Review all major scales
- Now do all 5 for Dominant (mixolydian)
- Review Fingerpicking
- Rhiannon

Lick of the day

- Rhiannon

Rhiannon

[Am] [F]

Rhiannon rings like a bell through the night
And wouldn't you love to love her?
Takes to the sky like a bird in flight
And who will be her lover?

*[PRE-CHORUS] [C] [F]

All your life you've never seen
A woman, taken by the wind
Would you stay if she promised you heaven?
Will you ever win.....?

*[Verse-2] [Am] [F]

She is like a cat in the dark
And then she is the darkness
She rules her life like a fine skylark
And when the sky is starless

*[PRE-CHORUS] [C] [F]

All your life you've never seen a woman
Taken by the wind.
Would you stay if she promised you heaven
Will you ever win?
Will you ever win?

*[CHORUS] [Am] [F] [4x] (Rhiannon-starts-on-(F))
Rhiannon, Rhiannon, Rhiannon, Rhiannon

Am



Rhiannon

This whole melody is harmonized in the intervals of 3rd's other than the last notes in the 2nd measure, which are 4ths. See below for fingerings. Look at fingering under the top 2 lines and diagrams under the bottom 2 lines.

AC BD CE C-E BD AC BC AE

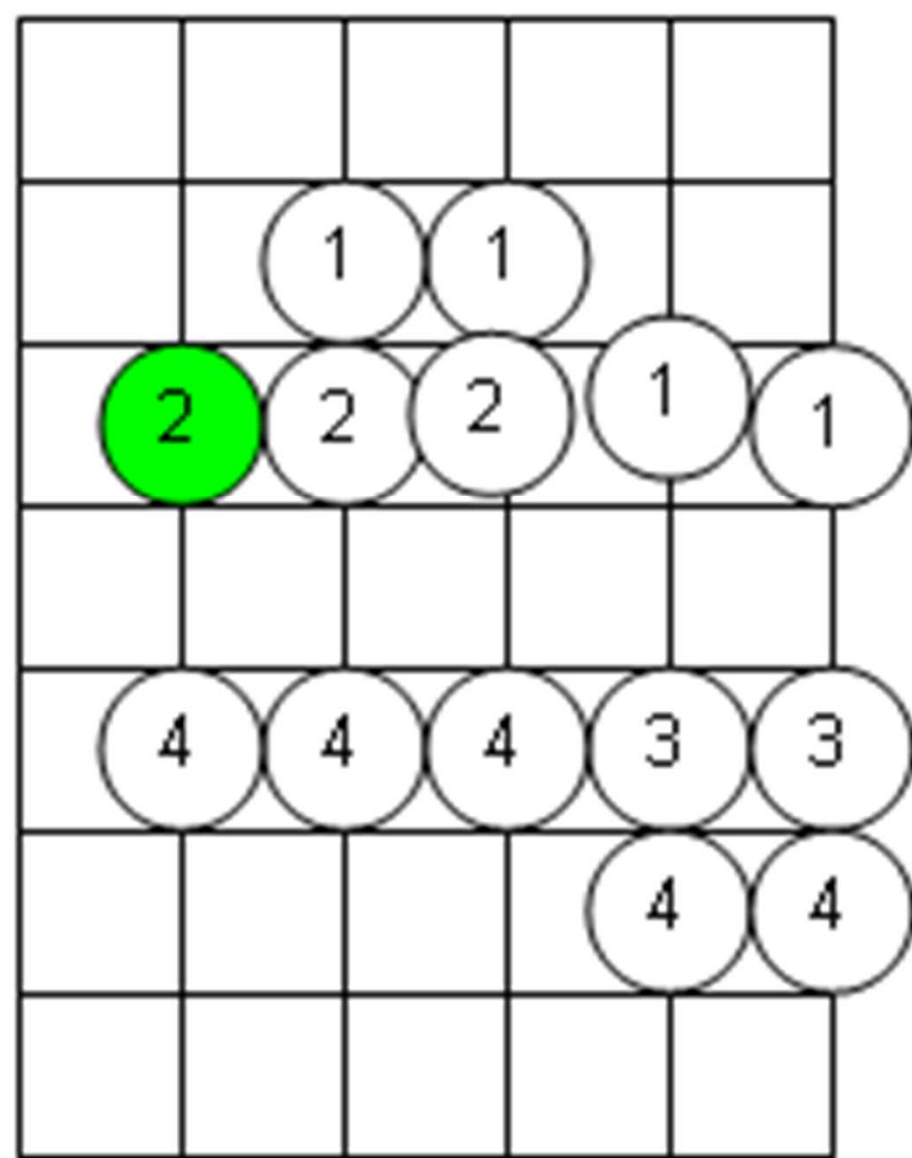
(Key to playing both parts together isto do one 1/8th note at a time. Notice when the two parts happen together and when the melody is holding a note and only the bass is playing. For 3rd fret 6th string use your pinky or thumb. For 6th string, 1st fret come across with your thumb. Don't barre the F Chord!!!!)

While it is possible not to use the thumb it is easier in the long run if you can. The thumb does not have to come all the way over but just hook the 6th string 2nd Fret.

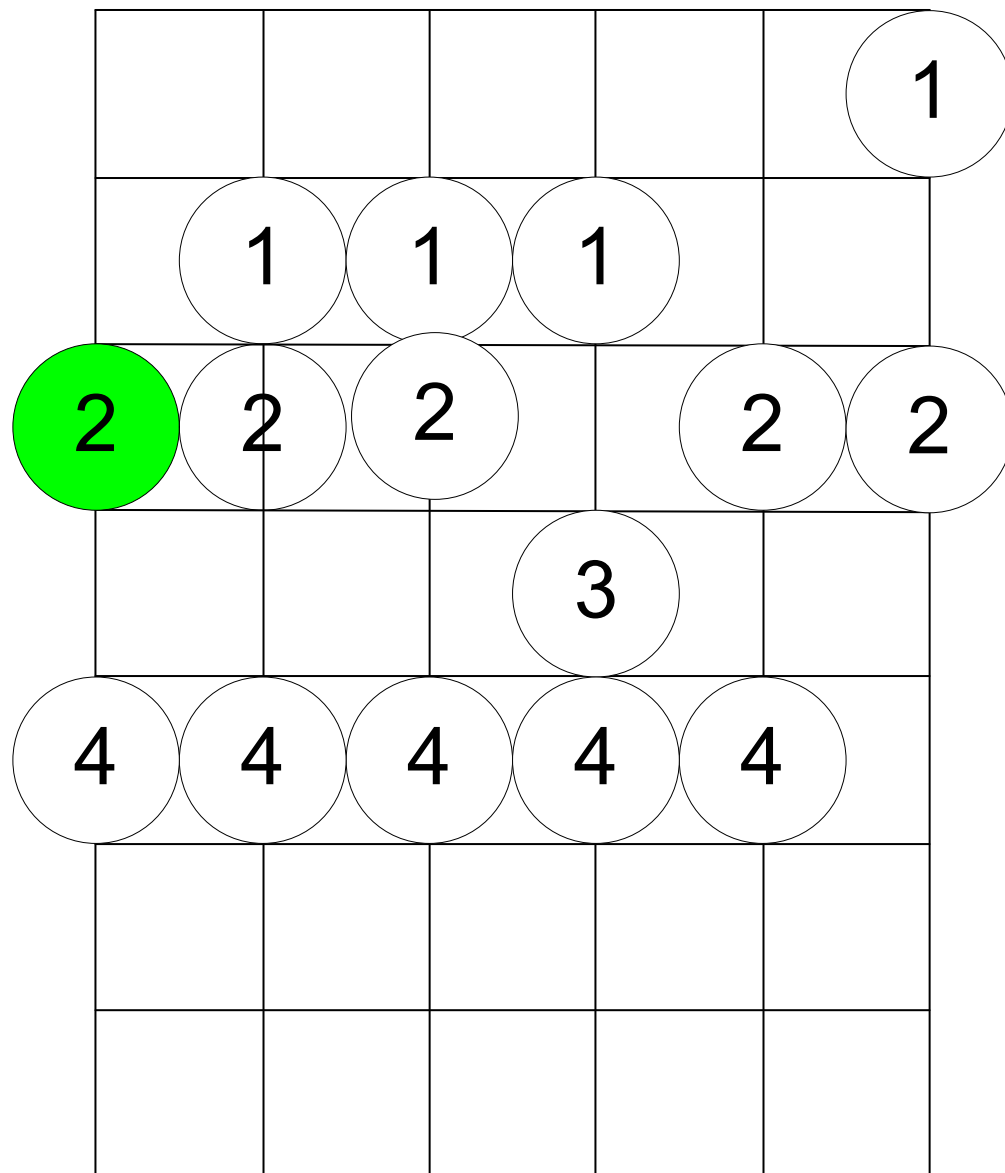
FA BD Ac BD FA

Here I would use the Thumb on the 6th string 3rd fret!

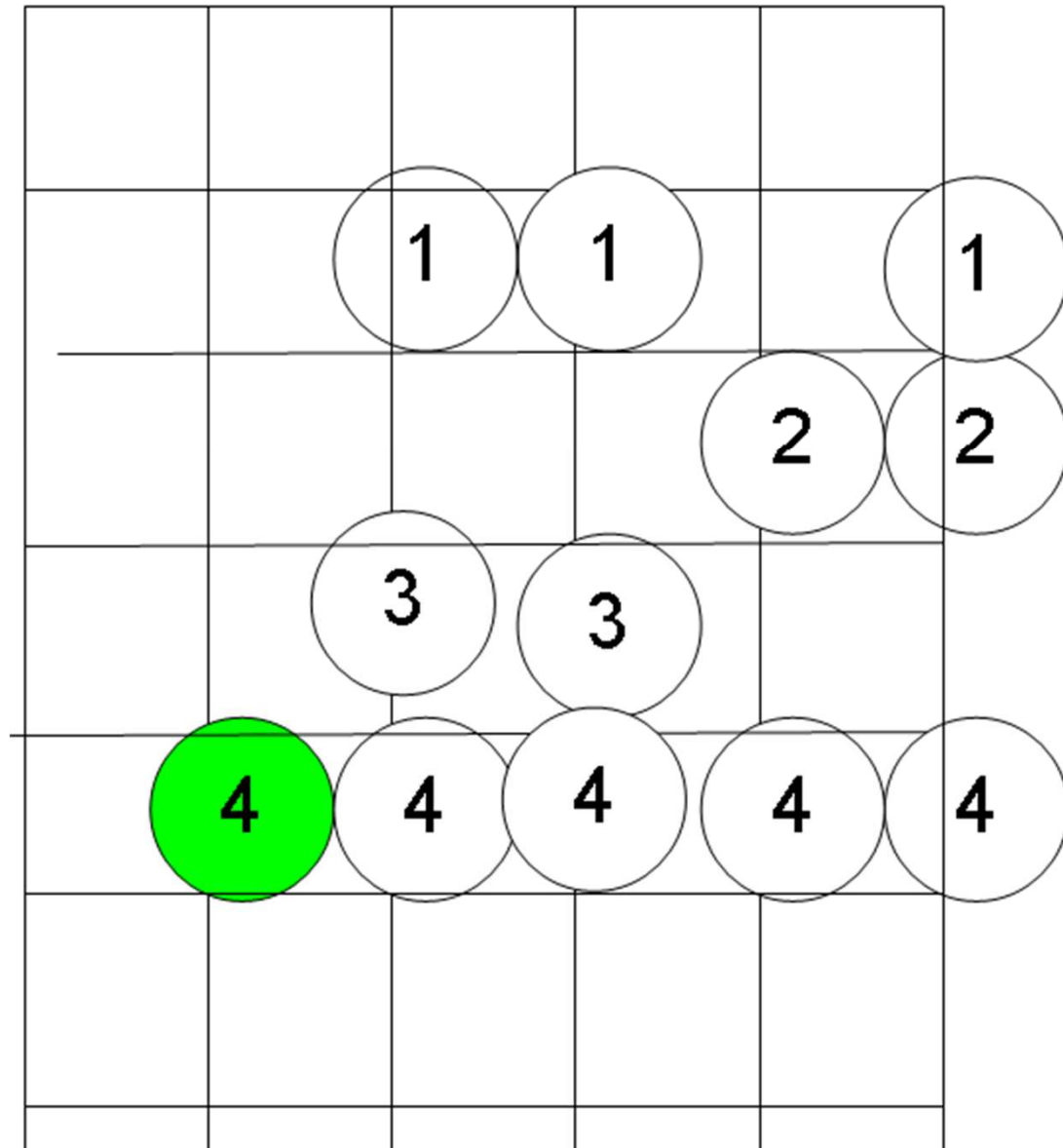
A form Mixolydian (Dom7)



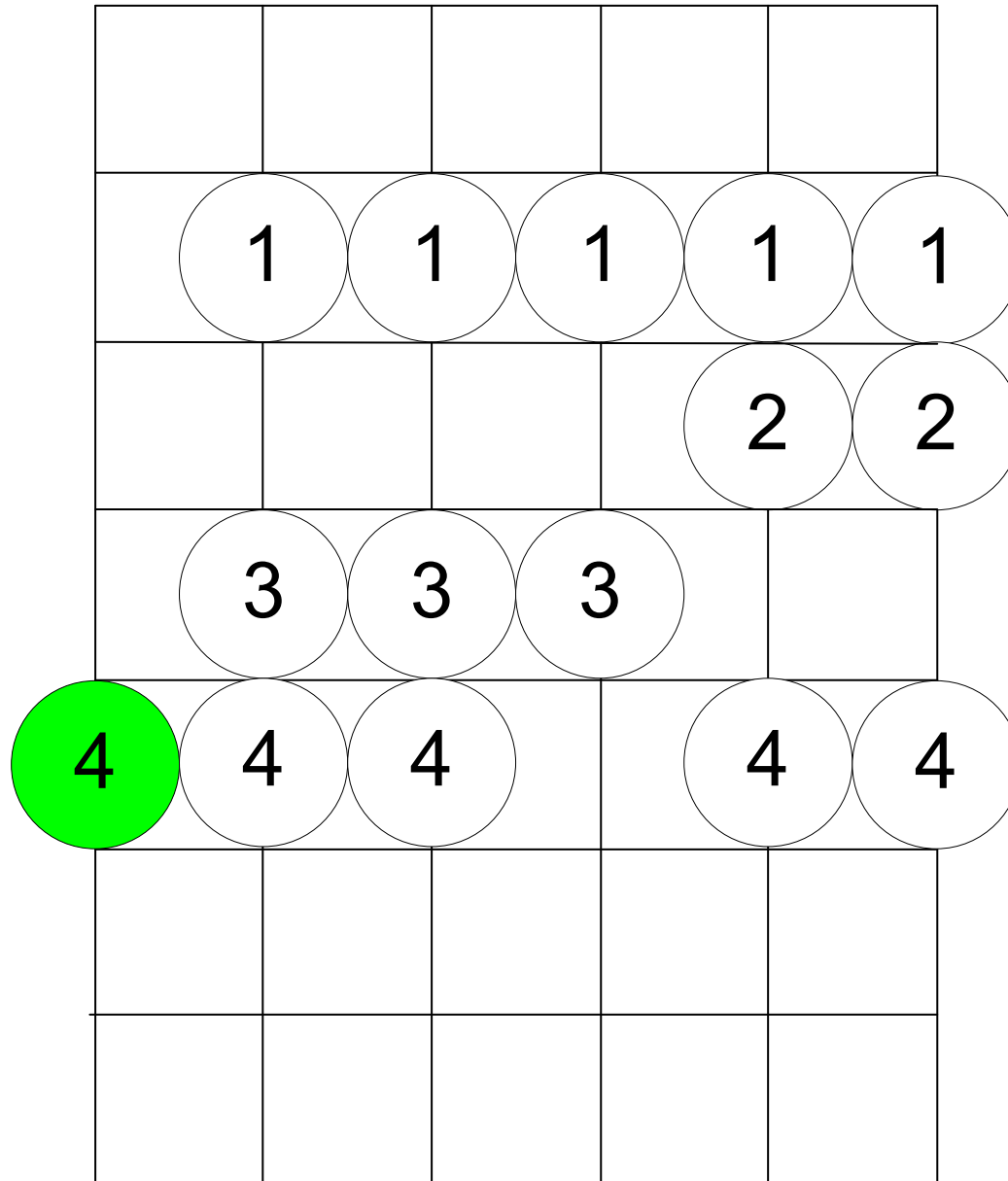
E form Mixolydian



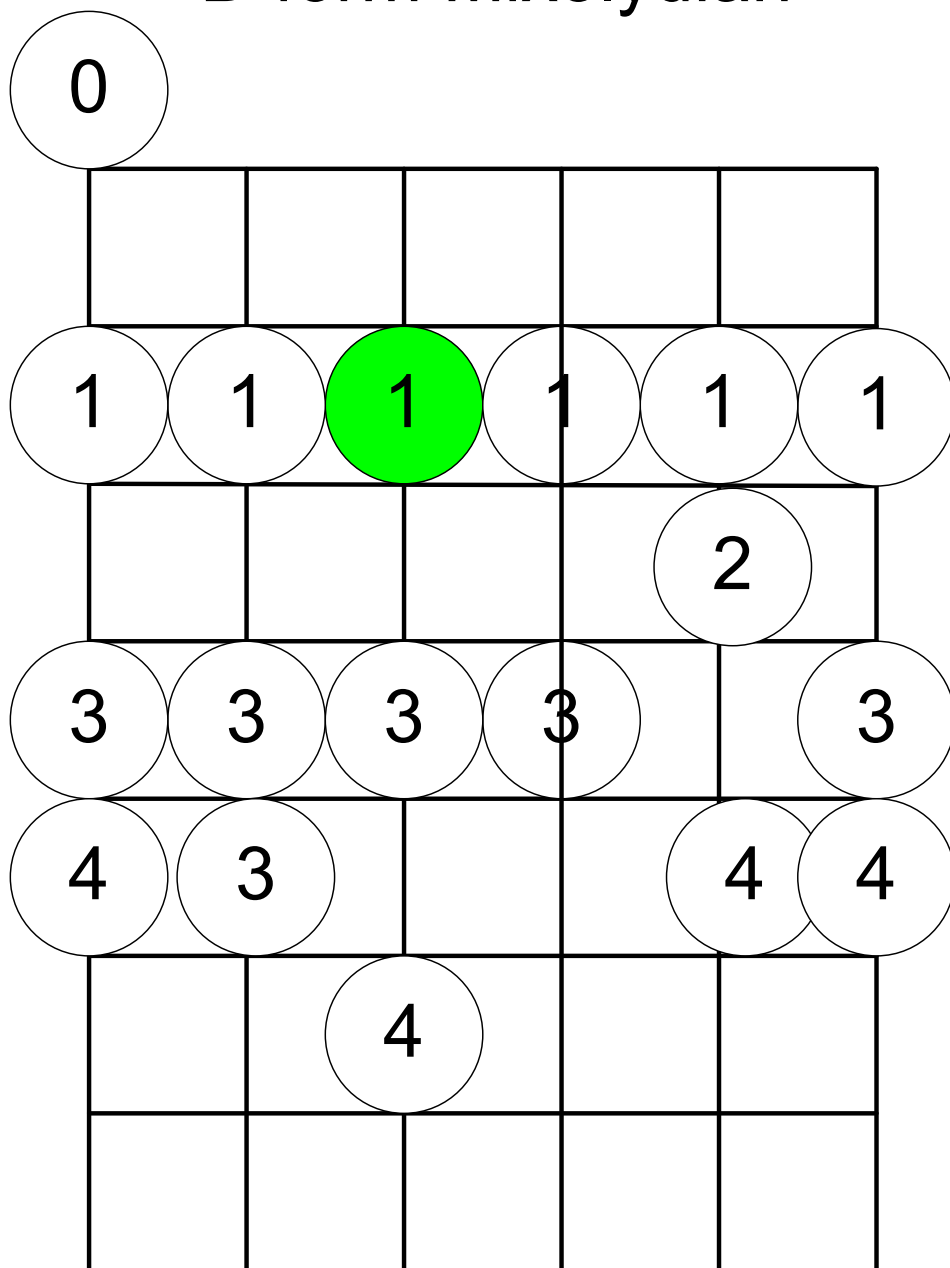
C form Mixolydian



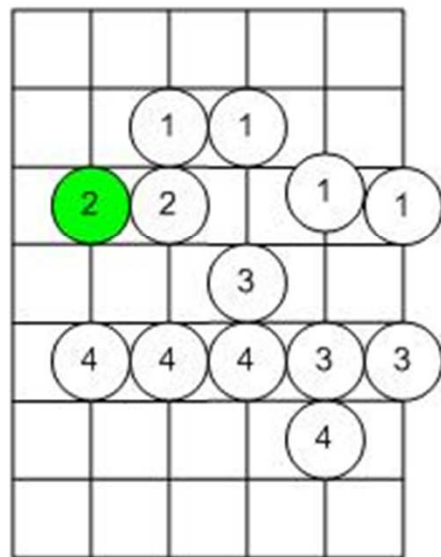
G form Mixolydian



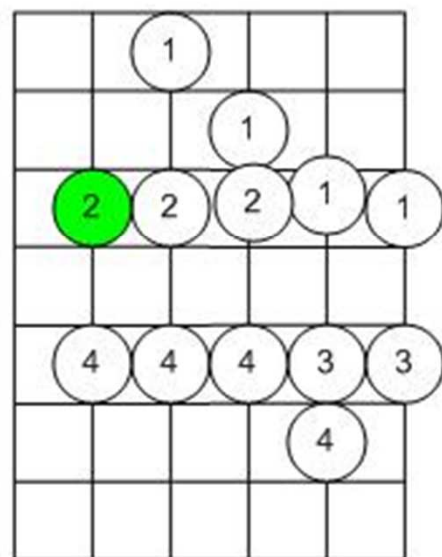
D form Mixolydian



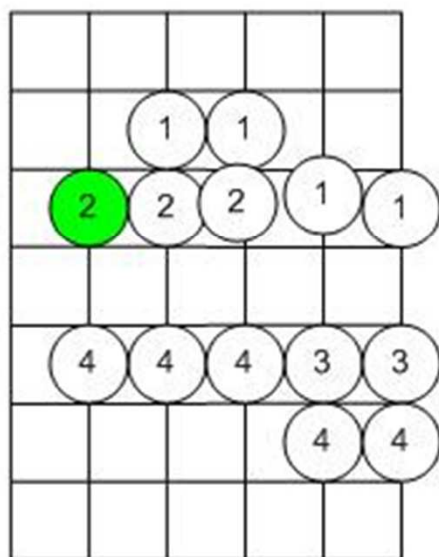
A form (C major)



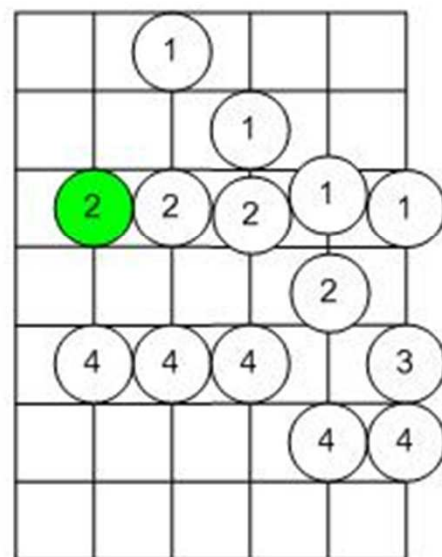
A form Melodic Minor



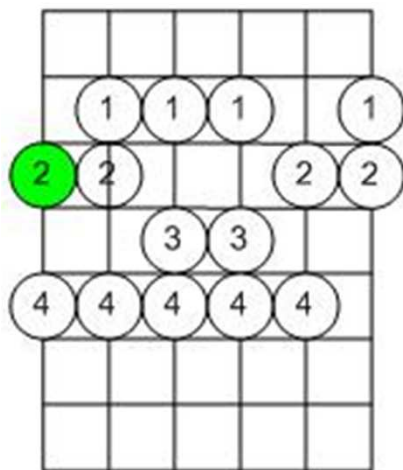
A form Mixolydian (Dom7)



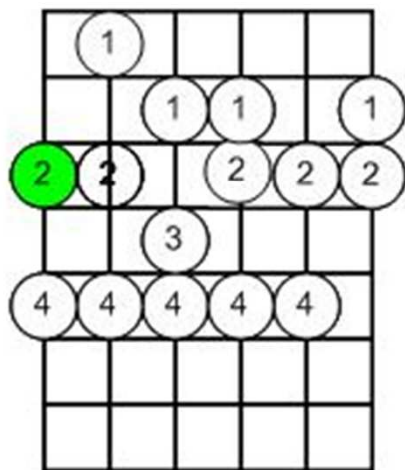
A form Dorian Mode



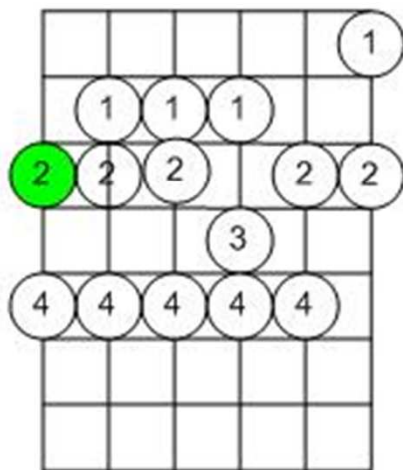
E form (G Major)



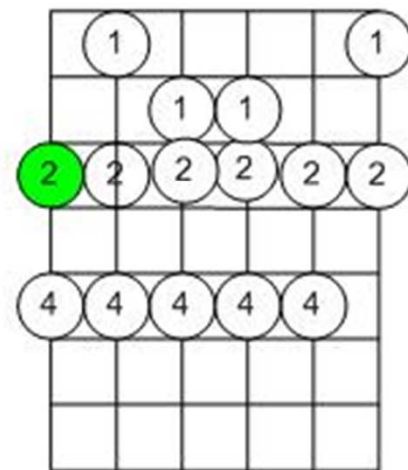
E form Melodic Minor



E form Mixolydian

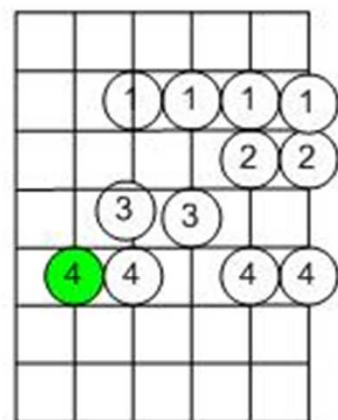


E form Dorian Mode

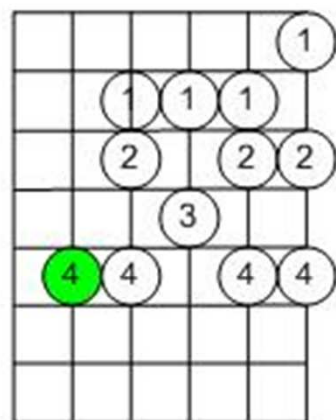


C form Mixolydian

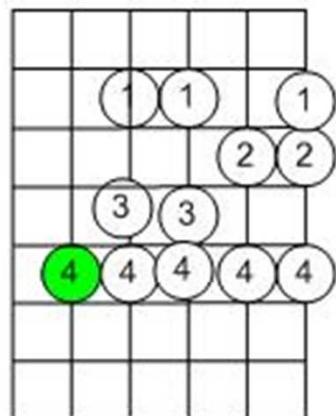
C form (D Major)



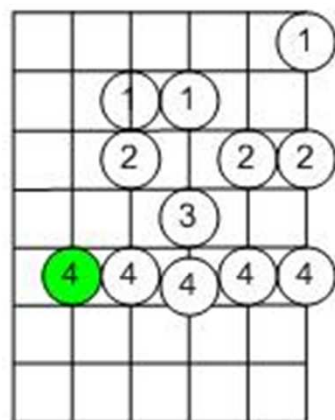
C form Melodic Minor



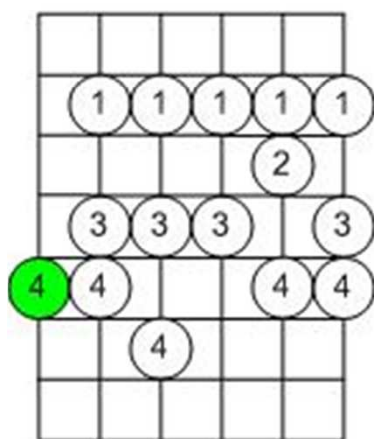
C form Mixolydian



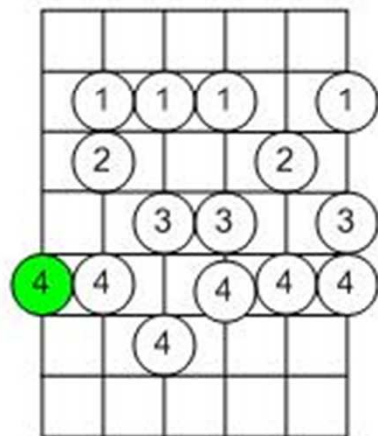
C form Dorian Mode



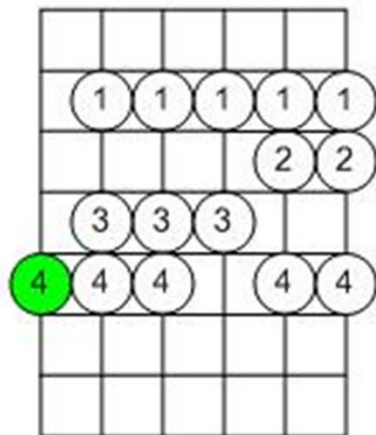
G form (A Major)



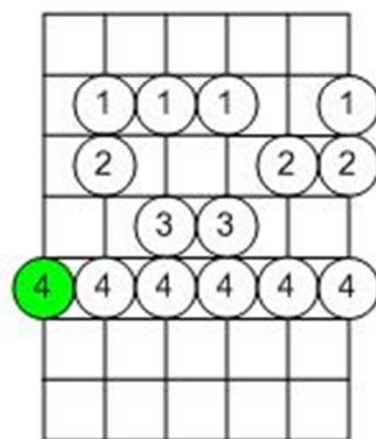
G form Melodic Minor



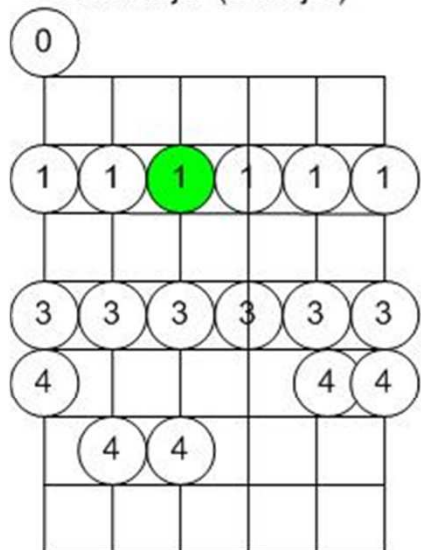
G form Mixolydian



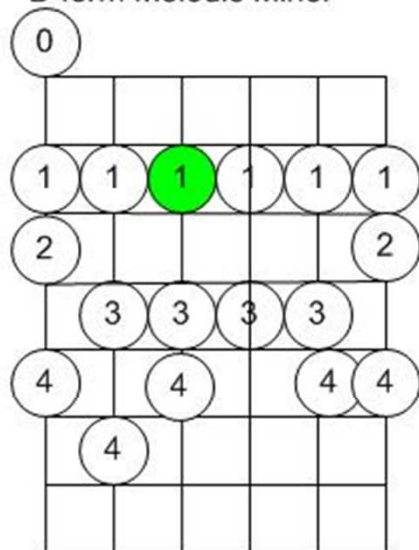
G form Dorian Mode



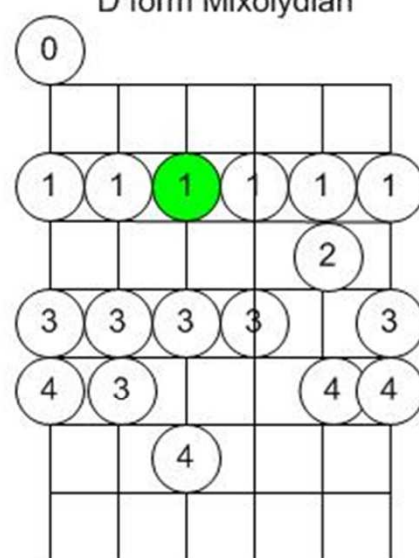
D form Major (E Major)



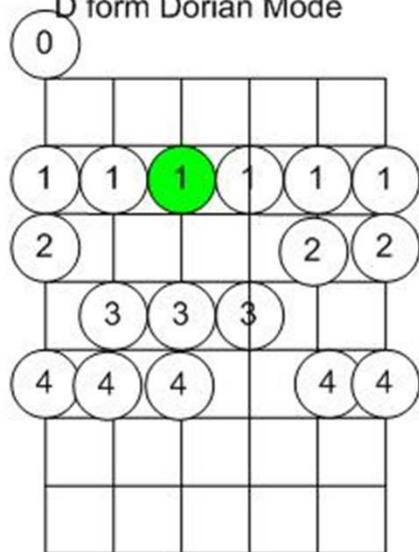
D form Melodic Minor



D form Mixolydian



D form Dorian Mode



Note on playing up the neck. Use your first finger on the 1st 2 notes.

Rockabilly Fingerpicking

Score

[Subtitle]

[Composer]

[Arranger]

Guitar

Guitar

T
A
B

The image shows a musical score for guitar in 4/4 time, featuring a melody and a bass line with fingerings. The score is divided into two systems. The first system contains the first four measures, and the second system contains the next four measures. The melody is written in a treble clef with a key signature of one sharp (F#) and a 4/4 time signature. The bass line is written in a bass clef and includes fingerings (3, 4, 5) and slurs. The score is enclosed in a double bar line at the end.

Now with rest on & after 1

Count	What you play
1	Thumb plays the 5 th string
&	Rest
2	Thumb plays the 4 th string
&	Index finger plays the 2 nd string
3	Thumb plays the 5 th string
&	Middle finger plays the 1 st string
4	Thumb plays the 4 th string
&	Index finger plays the 2 nd string

Add in a Pinch

- | Count | What you play |
|-------|--|
| 1 | Thumb plays the 5 th string, Middle plays 1 st string. |
| & | Rest |
| 2 | Thumb plays the 4 th string |
| & | Index finger plays the 2 nd string |
| 3 | Thumb plays the 5 th string |
| & | Middle finger plays the 1 st string |
| 4 | Thumb plays the 4 th string |
| & | Index finger plays the 2 nd string |

Nothing on the & after 4

Count	What you play
1	Thumb plays the 5 th string, Middle plays 1 st string.
&	Rest
2	Thumb plays the 4 th string
&	Index finger plays the 2 nd string
3	Thumb plays the 5 th string
&	Middle finger plays the 1 st string
4	Thumb plays the 4 th string
&	Rest

Variations on Landslide

Count	What you play
1	Thumb plays the 5 th string
&	Index finger plays the 3 rd string
2	Thumb plays the 4 th string
&	Middle finger plays the 2 nd string
3	Thumb plays the 5 th string
&	Index finger plays the 3 rd string
4	Thumb plays the 4 th string
&	Middle finger plays the 2 nd string

First Variation

Count	What you play
1	Thumb plays the 5 th string
&	Rest
2	Thumb plays the 4 th string
&	Middle finger plays the 2 nd string
3	Thumb plays the 5 th string
&	Index finger plays the 3 rd string
4	Thumb plays the 4 th string
&	Middle finger plays the 2 nd string

2nd Variation

Count	What you play
1	Thumb plays the 5 th string
&	Index finger plays the 3 rd string
2	Thumb plays the 4 th string
&	Middle finger plays the 2 nd string
3	Thumb plays the 5 th string
&	Index finger plays the 3 rd string
4	Thumb plays the 4 th string
&	Rest

Starting with Pinch (Roll)

- | Count | What you play |
|-------|---|
| 1 | Thumb plays the 5 th string, middle hits 2 nd string. |
| & | Index finger plays the 3 rd string |
| 2 | Thumb plays the 4 th string |
| & | Middle finger plays the 2 nd string |
| 3 | Thumb plays the 5 th string |
| & | Index finger plays the 3 rd string |
| 4 | Thumb plays the 4 th string |
| & | Rest |

#4

Count	What you play
1	Thumb plays the 5 th string
&	Index finger plays the 2nd string
2	Thumb plays the 4 th string
&	Middle finger plays the 1st string
3	Thumb plays the 5 th string
&	Index finger plays the 2nd string
4	Thumb plays the 4 th string
&	Middle finger plays the 1st string

Route 66

Classic standard in Blues, Rock
and Jazz

Basic 12 bar blues form

- Originally in F
- Will start it in A.
- You should be able to play this in any key.
- We will do some backup riffs for this in class

Route 66

[Composer]

Guitar

A D7 A7 D7

If you ever plan to motor west — Trav-el My way take the

Guitar

TAB

10 10 10 10 10 10 9 9 10 10 9 10 10 10 9

Gtr.

A Bm7 E7 A

high way that's the best — get your kicks on rout — sis-ty six —

Gtr.

10 10 10 9 10 10 10 9 10 9 12 9 10

Gtr.

E7 A D7 A7 D7

It winds — from chi-ca-go to La — more — than two — thousand

Gtr.

10 10 10 10 10 10 9 9 10 10 9 10 10 10

Gtr.


A7 Bm7 E7 A

miles all the way — Get your kicks on route — six-ty six —

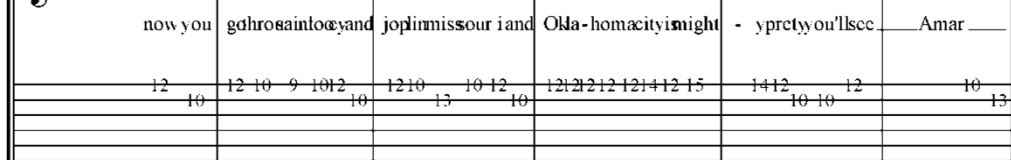
Gtr.

10 10 9 10 10 10 9 10 9 12 9 10

2/4 E7 A7 D7 Route 66 D7

Gtr. 

now you go hro sainto eand joplin missour i and Olda-homacity imight - yprectyou'llscc Amar

Gtr. 


30 a7 Bm7 E7 A7 A#dim

Gtr. 

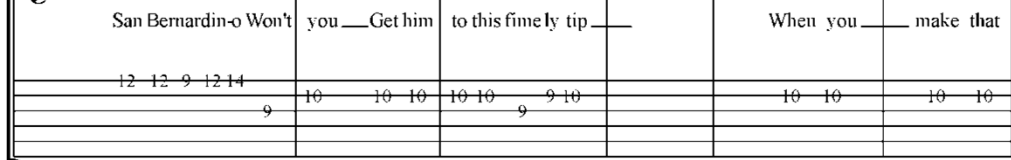
illo GalupNew Mex-i-co Flagstaff Arizona Don't forget Winnona Kingman Barstow

Gtr. 


36 Bm7 E7 A7 D7 A7 D7

Gtr. 

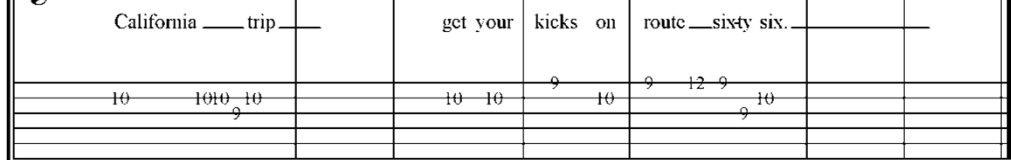
San Bernardin-o Won't you Get him to this fine ly tip When you make that

Gtr. 

42 A7 Bm7 E7 A7 D7 A

Gtr. 

Califonia trip get your kicks on route sixty six

Gtr. 

Now for one backup idea

The image shows a musical score for guitar, consisting of two systems. The top system is labeled 'uitar' on the left and contains a single staff with a treble clef, a key signature of two sharps (F# and C#), and a common time signature (C). The notation includes a whole rest, followed by a quarter note chord, a half note chord, a quarter note chord, a half note chord, and a quarter note chord. The bottom system is also labeled 'uitar' on the left and contains three staves for guitar tablature, labeled 'T', 'A', and 'B' from top to bottom. The tablature shows fingerings for the strings: the top line (T) has a 5, the middle line (A) has a 5, and the bottom line (B) has a 5. A vertical bar line is placed after the first measure. The second measure has a 5 on the top line, a 5 on the middle line, and a 5 on the bottom line. The third measure has a 7 on the top line, a 7 on the middle line, and a 7 on the bottom line. The fourth measure has a 5 on the top line, a 5 on the middle line, and a 5 on the bottom line. The fifth measure has a 5 on the top line, a 5 on the middle line, and a 5 on the bottom line. The sixth measure has a 5 on the top line, a 5 on the middle line, and a 5 on the bottom line. The score ends with a double bar line.

Solo Work

- Start with just the blues scale in A.
- Then do blues scales as the chords change, an A blues scale on A, a D blues scale on D, on the Bm7 and E7 use an E blues scale.
- Then scales related to chords.
 - For A (A7) an A mixolydian.
 - For D7 a D mixolydian
 - For E7 an E mixolydian scale

Now in F both low and high

- Again solo similar to A but now in F.
- Learn the chords two ways.

Route 66

[Composer]

F B^b7 F7 B^b7

Guitar

If you ev-re plan to mo-tor west Trav-el My way take the

Guitar

T
A
B

3 3 3 3 3 3 2 3 3 3 3 3 3

6 F Gm7 C7 F

Gtr.

high way that's the best get your kicks on rout sis-ty six

Gtr.

3 3 3 3 3 3 2 3 2 1 2 3 3

12 C7 F B^b7 F7 B^b7

Gtr.

It winds from chi-ca-go to L a more than two thousand

Gtr.

3 3 3 3 3 3 2 3 3 3 3 3 3

18 F7 Gm7 C7 F


Gtr.

miles all the way Get your kicks on route six-ty six

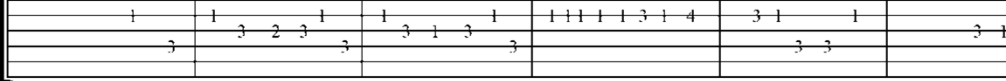
Gtr.

3 3 3 3 3 3 2 3 2 1 2 3 3


2/34 C7 F7 B^b7 Route 66⁷ B^b7

Gtr. 

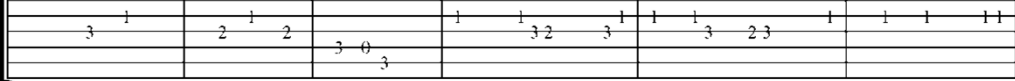
now you gethrosaintoayand joplinmissour iand Oka-homacityisnight - yprettyou'llsee Amar

Gtr. 

30 f7 Gm7 C7 F7 F[#]dim

Gtr. 

illo Ga lupNew Mex-i-co Flagstaff Arizona Don't forget Winnona KingmanBarstow

Gtr. 

36 Gm7 C7 F7 B^b7 F7 B^b7

Gtr. 

San Bernardin-o Won't you Get him to this fine-ly tip When you make that

Gtr. 

42 F7 Gm7 C7 F7 B^b7 F

Gtr. 

California trip get your kicks on route sixty six

Gtr. 

Route 66

[Composer]

Guitar

F B^b7 F7 B^b7

If you ever plan to motor west Travel My way take the

Guitar

T
A
B

6 6 6 6 6 6 5 5 6 6 5 6 6 6 5

6

Gtr.

F Gm7 C7 F

high way that's the best get your kicks on route sixty six

Gtr.

6 6 6 5 6 6 6 5 6 5 8 5 6 5 6

12

Gtr.

C7 F B^b7 F7 B^b7

It winds from chi-ca-go to La more than two thousand

Gtr.

6 6 6 6 6 6 5 5 6 6 5 6 6 6

18

Gtr.


F7 Gm7 C7 F

miles all the way Get your kicks on route sixty six

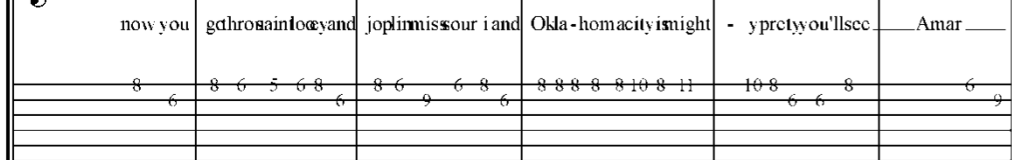
Gtr.

6 6 5 6 6 6 5 6 5 8 5 6 5 6


2/24 C7 F7 Bb7 Route 66 Bb7

Gtr. 

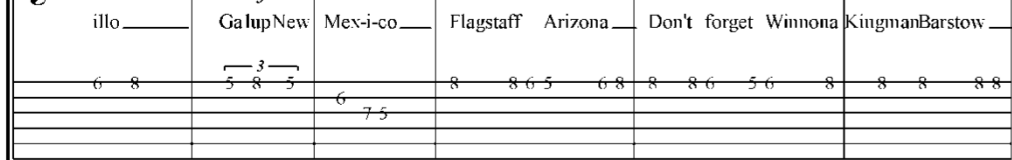
now you g'dhrosaintoeyand joplmissour i and Okla-homacityismight - yprectyou'llsee Amar

Gtr. 


30 f7 Gm7 C7 F7 F#dim

Gtr. 

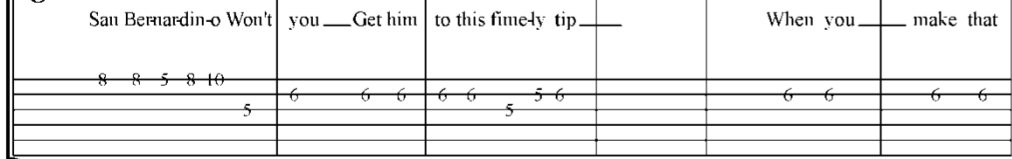
illo GalupNew Mex-i-co Flagstaff Arizona Don't forget Winnona KingmanBarstow

Gtr. 


36 Gm7 C7 F7 Bb7 F7 Bb7

Gtr. 

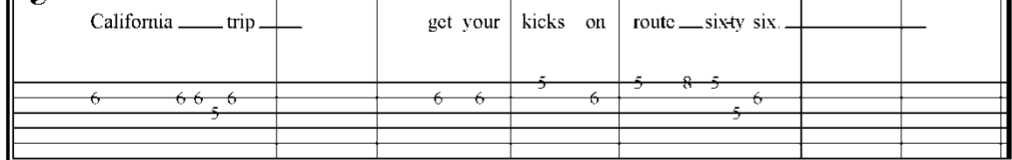
San Bernardin-o Won't you Get him to this fine-ly tip When you make that

Gtr. 

42 F7 Gm7 C7 F7 Bb7 F

Gtr. 

California trip get your kicks on route sixty six.

Gtr. 

Learn this in all keys

- Learn to play this in all keys
- Try to solo in all keys
- Try creating riffs in all keys

On Broadway

Notes of melody in the chord!

Begin with just the chords

- First learn them in 1st position then we will move them up.
- Not difficult but make sure that you have them memorized.

On Broadway

A G A G A G A G

4/4 ||: They say the neon | lights are bright on | Broadway |

A G A G A G A G D C

They say there's always | magic in the | Air | | But when your walk-in

D C D C D E7 A G

down the street | and you ain't had e | nough to eat | the glitter rubs right

A G A G A G

Off and you're no | where | :||

They say the women treat you fine on Broadway.

But lookin' at them just gives me the blues.

Cause how ya gonna make some time

When all you got is one thin dime.

And one thin dime won't even shine your shoes.

They say that I won't last too long on Broadway

I'll catch a Greyhound bus for home they say.

But they're dead wrong, I know they are.

Cause I can play this here guitar.

And I won't quit till I'm a star on Broadway.

On Broadway

A G A G A G A G
4/4 ||: They say the neon | lights are bright on | Broadway |

A G A G A G A G D C
They say there's always | magic in the | Air | | But when your walk-in

D C D C D E7 A G
down the street | and you ain't had e | nough to eat | the glitter rubs right

A G A G A G
Off and you're no | where | :||

They say the women treat you fine on Broadway.
But lookin' at them just gives me the blues.
Cause how ya gonna make some time
When all you got is one thin dime.
And one thin dime won't even shine your shoes.

They say that I won't last too long on Broadway
I'll catch a Greyhound bus for home they say.
But they're dead wrong, I know they are.
Cause I can play this here guitar.
And I won't quit till I'm a star on Broadway.

Notes:

1. The melody is almost totally in the chords – remember – the chord rules – anyway to play this use the chords as the basis. To start hold the A chord down and play the 4th string to the 2nd string – that is the first 2 notes of the melody.
2. Next step is to try finding the melody in each chord as you go along. It may take some time. The timing of the chords is such that it is like the Charleston, for example, the A is 1 ½ beats and the G is 2 ½ beats. Sometimes that A will come in slightly early.
3. The original key is E and we will move it there later.
4. For the G if you are playing the melody just play the 2nd, 3rd, and 4th strings open.
5. Have people play in groups where one plays the melody and the 2nd person the chords.

Chord Rhythm Basic

Chord Pattern:

4/4/ ||: A G : ||

Count (1&2) (&34)

This is like a Charleston rhythm.

Basic pattern like Drifters did.

Use Capo in other positions

- OK, now the CAGED or Capo for other positions:

1 st	5 th	7 th
A	E	D
G	D	C
D	A	G
C	G	F
E7	B7	A7

Learn the chords in each position

- Work in groups to do parts in different positions.
- Even try to do the melody in different positions once you have learned it in 1st position.

On Broadway Guitar Backup

A G/A A G/A

Guitar

Guitar

T
A
B

D C/D D C/D

Gtr.

Gtr.

For A to G do the 1st 2 measures. For D to C the 2nd 2 measures. This is the rhythmic pattern used in the George Benson recording.

Now that you have the chords

- Next add in the melody.
- It isn't that hard. Take it one note at a time.
- Holding an A chord down play the 4th string for the first note, the 2nd string for the 2nd note and the 3rd string for the 3rd note. Now change to a G/A and find the next melody note. Continue one note at a time.
- Write it out in traditional notes or in tablature.

On Broadway

Chords like Benson

[Composer]

Guitar

Guitar

T

A

B

5 6

5 5 5 5 5 5

6 6 6 6 6 6

7 7 7 7 7 7

5 5 5 5 5 5

3 3 3 3 3 3

4 4 4 4 4 4

3 3 3 3 3 3

Gtr.

A G A G A G A G A G

Gtr.

2 2 0 0

2 2 0 0

2 2

2 2 0 0

A G A G A G F D F D F D

Melody – all in or close to chord.

A G A G A G A G A G

Gtr.

Gtr.

A G A G A G D C D C D C

Gtr.

Gtr.

D E^b E A G A G A G A G

Gtr.

Gtr.

Then we will transpose it to E

- This is the original key of this song. Take your time and just image your index finger as the head nut.
- In fact you may find that the 2nd part moved up works even better! You can keep one fingering for all of them.

Here it is in the original key. Use chords on the following page

On Broadway Guitar Backup In E

E D/E E D/E

Guitar

Guitar

T
A
B

A G/A A G/A

Gtr.

Gtr.

For A to G do the 1st 2 measures. For D to C the 2nd 2 measures. This is the rhythmic pattern used in the George Benson recording.

On Broadway

E D E D E D E D
 4/4 |: They say the neon | lights are bright on | Broadway |

E D E D E D E D A G
 They say there's always | magic in the | Air | | But when your walk-in

A G A G A B7 E D
 down the street | and you ain't had e | nough to eat | the glitter rubs right

E D E D E D
 Off and you're no | where | :||

E	D/E	A

This should be muted

They say the women treat you fine on Broadway.
 But lookin' at them just gives me the blues.
 Cause how ya gonna make some time
 When all you got is one thin dime.
 And one thin dime won't even shine your shoes.

They say that I won't last too long on Broadway
 I'll catch a Greyhound bus for home they say.
 But they're dead wrong, I know they are.
 Cause I can play this here guitar.
 And I won't quit till I'm a star on Broadway.

Melody in E. See how it just moves up!

5

E D E D E D E D E D

Gtr.

Gtr.

10

E D E D E D A G A G A G

Gtr.

Gtr.

16

A B \flat B E D E D E D E D

Gtr.

Gtr.

Same as Tequila!!

- Everyone must learn this in the 1st position. Chords and melody.
- I would like the more advanced the whole piece in E.
- If you are playing this as just an intermediate, put your capo at the 7th fret and you will be playing it the same as the advanced students.

Brown Eyed Girl

G **C G** **D G** **C**
||: Hey, where did we | go | days when the rains | came. | Down in the | hollow |
G D G
playin' a new | game. | Laughin' and a |
C G D G C G
runnin', hey, hey, | Skippin' and a | jumpin, | In the misty morn | ing fog with | our |
D C D G Em C D
hearts a thumpin' and | you | My Brown Eyed Girl, | | | You're my | Brown Eyed
G D G C
Girl. | Do you remem- | ber when | we used to sing | Sha la la la | la la la la |
G D G C G D
la la la te da. | | Sha la la la | la la la la | la la la te da. | la te da.:| |

G C G D G C G D G
| | | | | ||: Sha la la la | la la la la | la la la te da. | :|| ||

Brown Eyed Girl Fills

Intro G C G D

1

Fill 1 G Emin G Bass Fill

5

C G D

9

Chord progression: C G D

3 3 3 3 3 3

Melody line (treble clef, key signature of one sharp) starting at measure 9.

Fingerings for the first system:

3 3~3 3 2 | 3 3 2 4 | 0 | 0 0 2 0

Chord progression: G C G D

Melody line (treble clef, key signature of one sharp) starting at measure 13.

13 Intro In Original Octave

Fingerings for the second system:

7 8 10 8 7 | 12 13 15 13 12 | 7 8 10 10 8 7 | 7 7~7 8 10

Mustang Sally

Wilson Pickett

{Intro: A7}

Verse 1

A7

Mustang Sally, guess you better slow that Mustang down

D7

A7

Mustang Sally, guess you better slow that Mustang down.

E7

(E7 Eb7) D7

You been runnin' all over town

D7

A7 G7 A7

Guess I'll have to put your flat feet back on the ground.

Refrain

A7

All you wanna do is ride around Sally (ride Sally ride)

All you wanna do is ride around Sally (ride Sally ride)

D7

All you wanna do is ride around Sally (ride Sally ride)

A7

All you wanna do is ride around Sally (ride Sally ride)

E7

(E7 Eb7) D7

A7 G7

A7

One of these early mornings, I'm gonna be wipin' those weepin' eyes.

Black Magic Woman

Santana

Dm Am
I got a black magic woman, I got a black magic woman
Dm Gm
I got a black magic woman got me so blind I can't see
Dm A Dm
I got a black magic woman she try'in to make a devil out of me

Dm Am
Turn your back on me baby, turn your back on me baby
Dm Gm
Turn your back on me baby don't turn babe
Dm A Dm
Turn your back on me baby you might just pick up my magic sticks

Dm Am
Got your spell on me baby, got your spell on me baby
Dm Gm
Got your spell on me baby turnin my heart into stone
Dm A Dm
I need you so bad magic woman I can't leave you alone

You Really Got A Hold On Me

Smokey Robinson

INTRO:

```
| C      | Am     | C      | Am     |  
| ////  | ////  | ////  | ////  |
```

VERSE:

C

I don't like you, but I love you

Am

Seems that I'm always thinkin' of you.

C

F

Dm

Tho' oh oh you treat me badly, I love you madly,

G7

C

Am

You really got a hold on me. You really got a hold on me.

C

I don't want you, but I need you.

Am

Don't wanna kiss you, but I need to

C7

F

Dm

Tho' oh oh you do me wrong now, my love is strong now.

G7

C

Am

You really got a hold on me. You really got a hold on me. Baby,

C7

F

I love you and all I want you to do is just

C

G7

Hold me, hold me, hold me, hold me.

```
| C      | Am G C |  
| ////  | / / // (tighter!) |  
| C      | Am G C |  
| ////  | / / // (tighter!) |
```


C	Am G C
////	/ / // (tighter!)
C	Am G C
////	/ / // (tighter!)

C

I wanna leave you, don't wanna stay here

Am

Don't wanna spend another day here

C7

F

Dm

Tho' oh oh I wanna split now, I can't quit now

G7

C

Am

You really got a hold on me. You really got a hold on me. Baby,

C7

F

I love you and all I want you to do is just

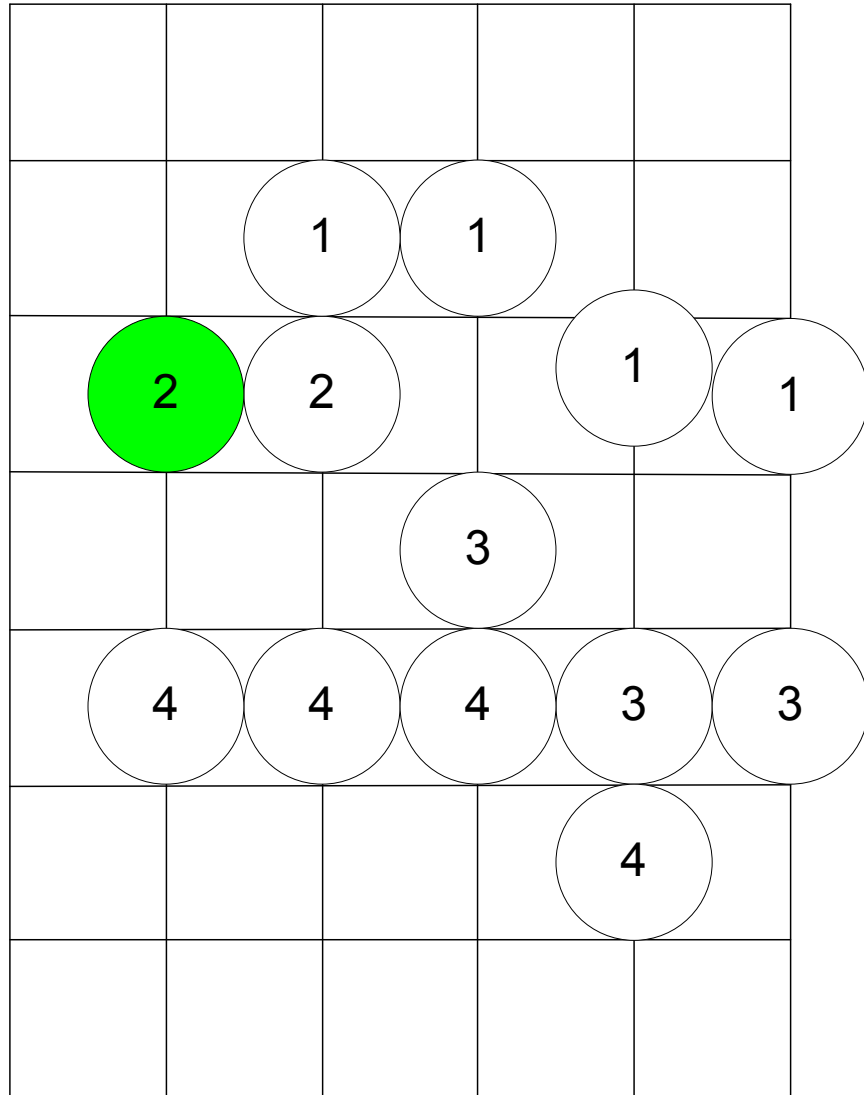
C

G7

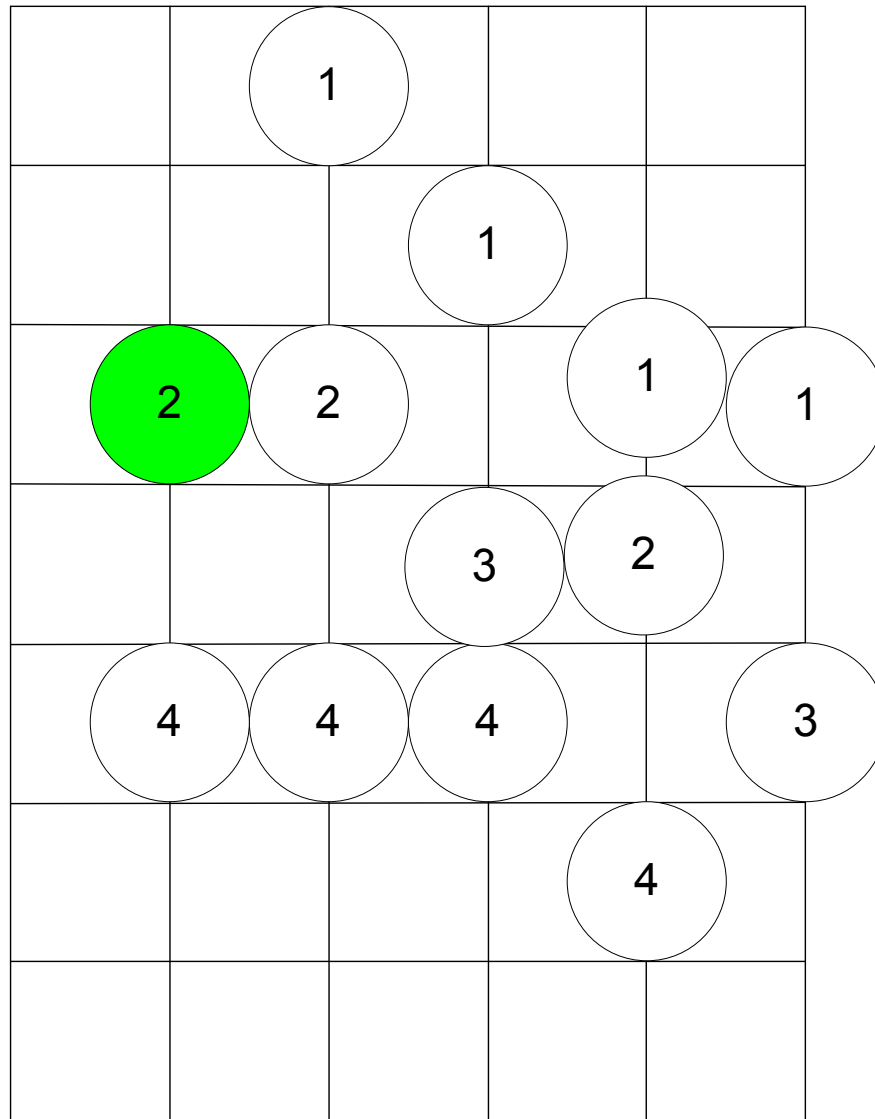
(Hold me) please, (hold me) squeeze, hold me

Reference Slides

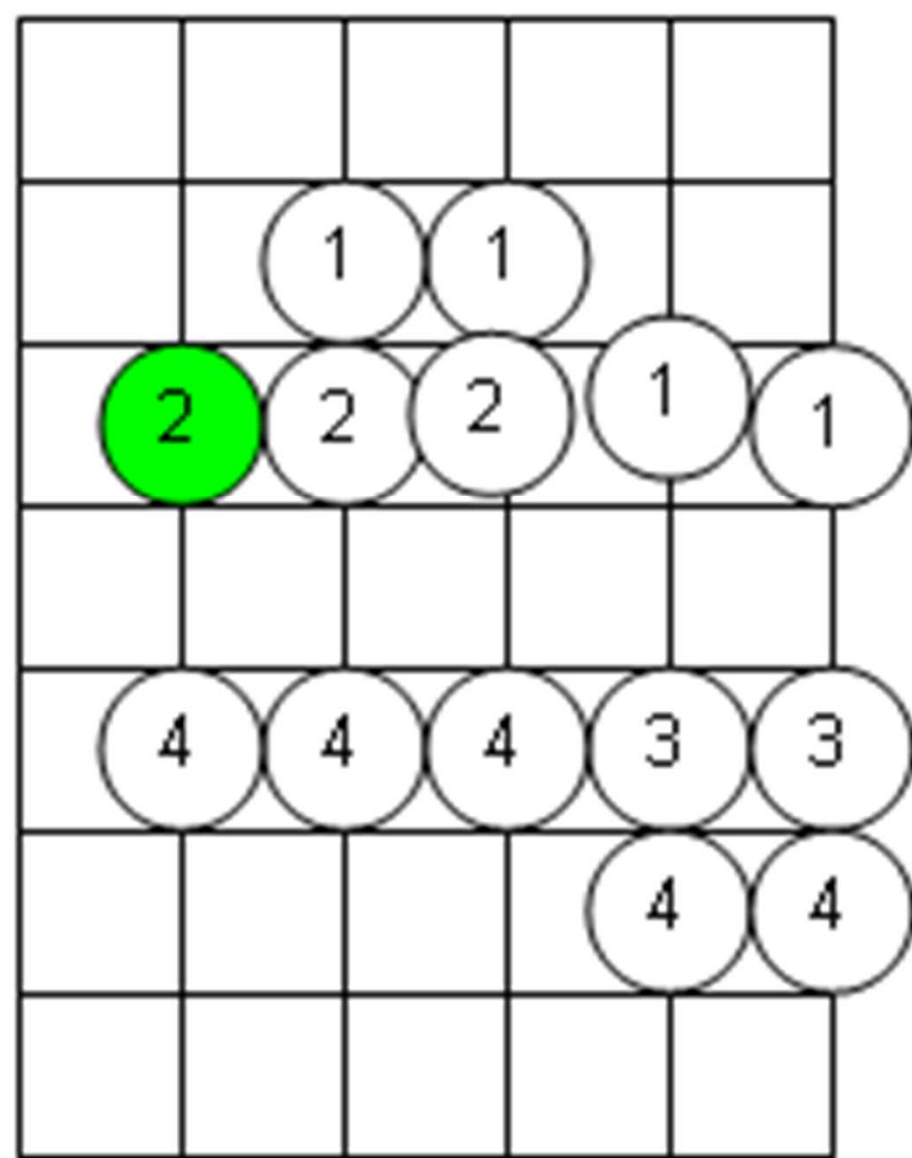
A form (C major)



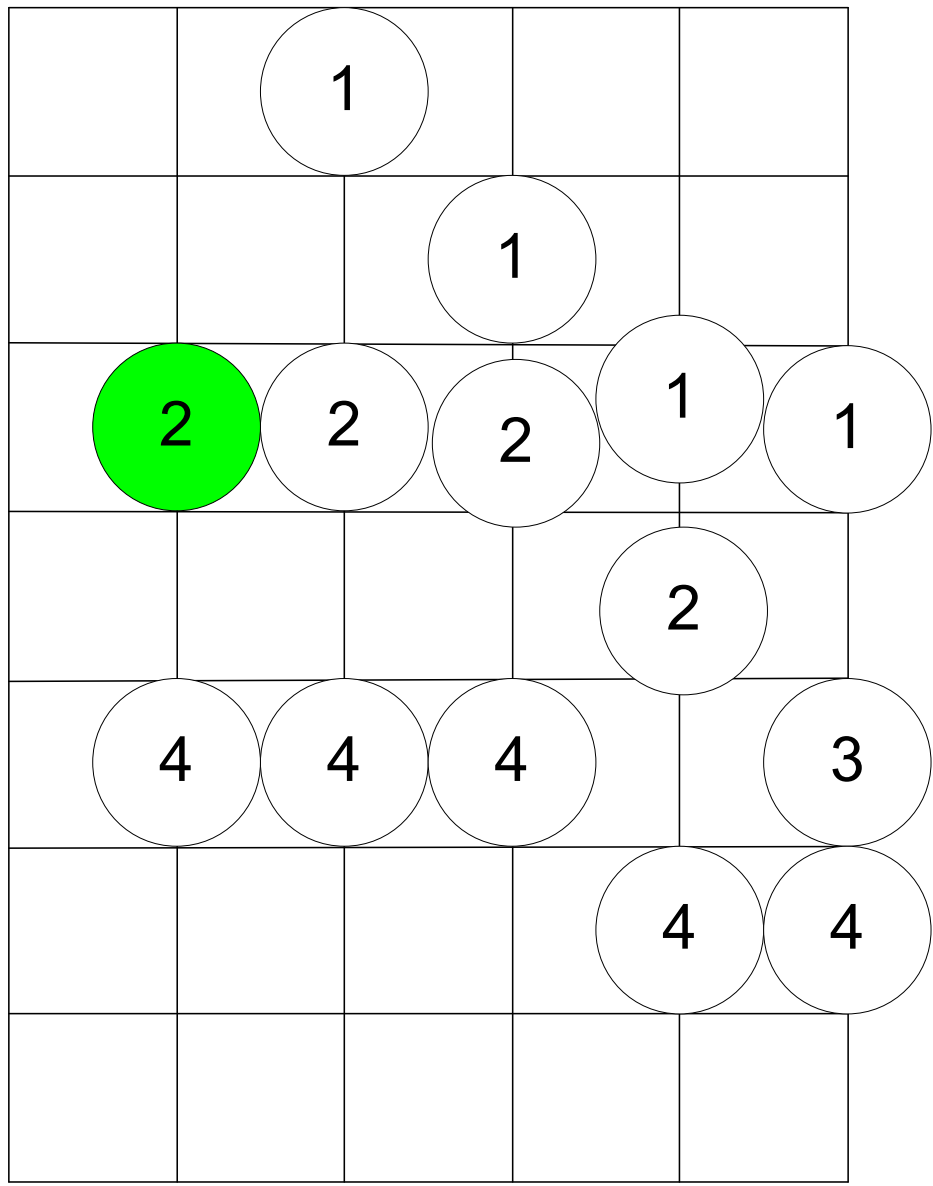
A form Melodic Minor



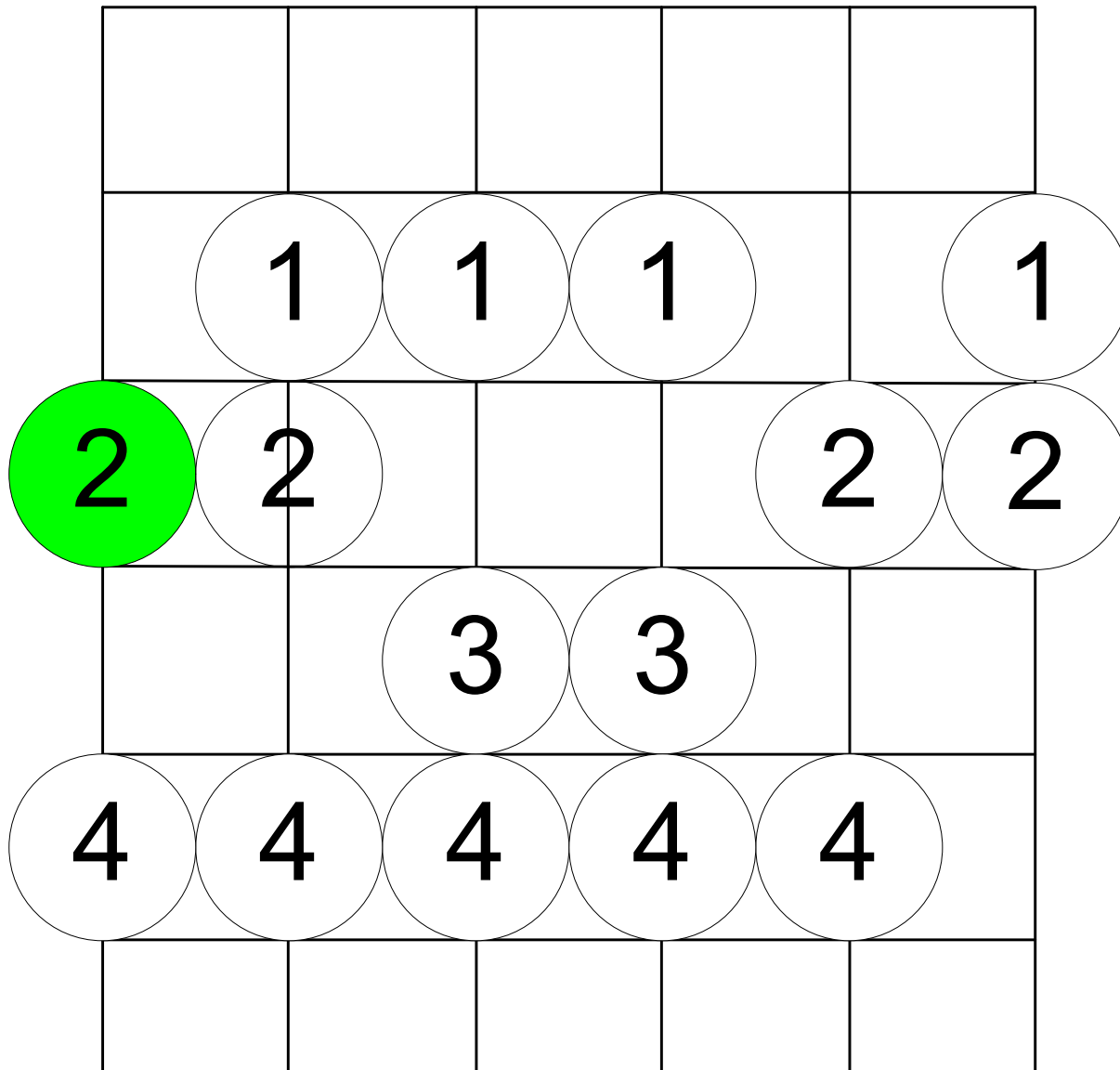
A form Mixolydian (Dom7)



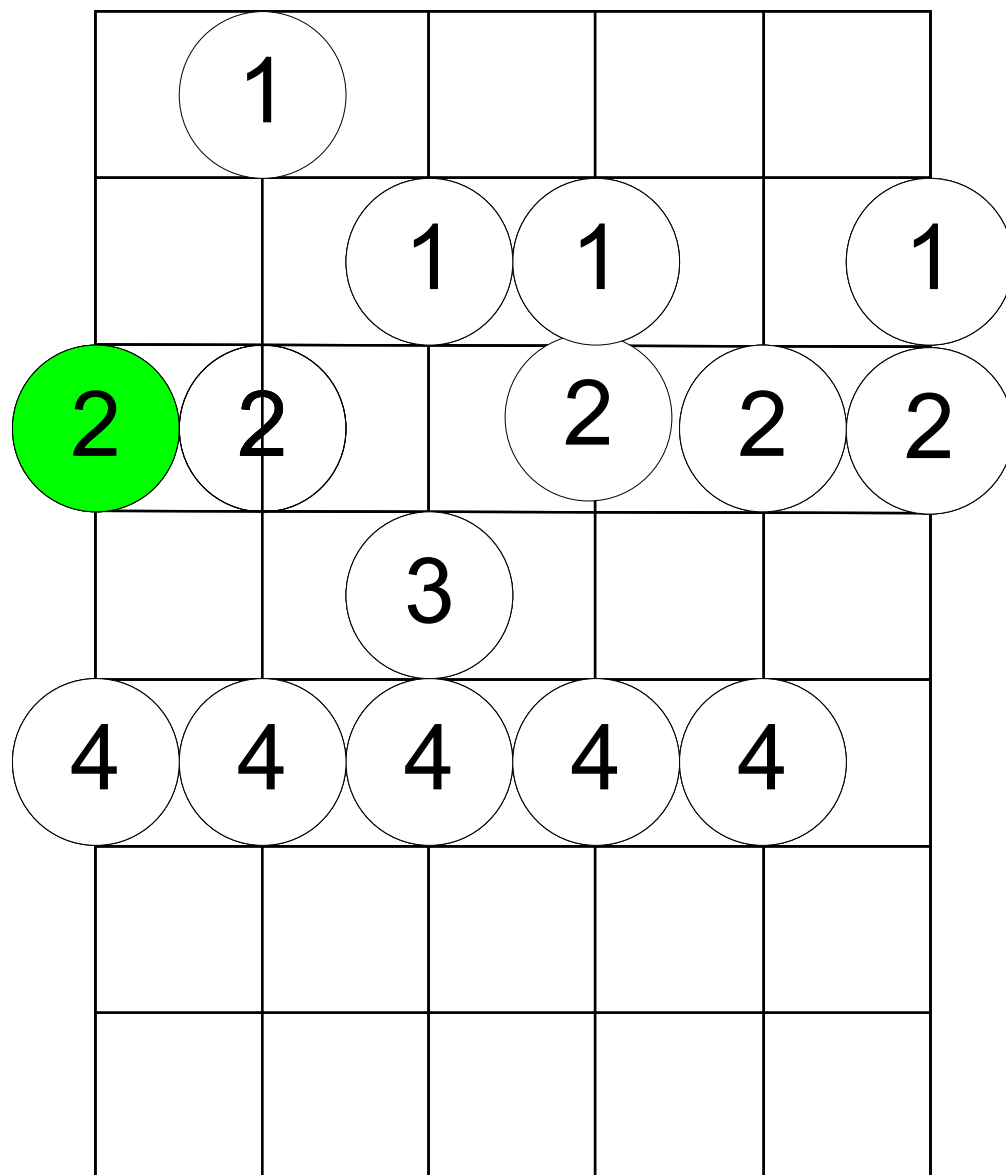
A form Dorian Mode



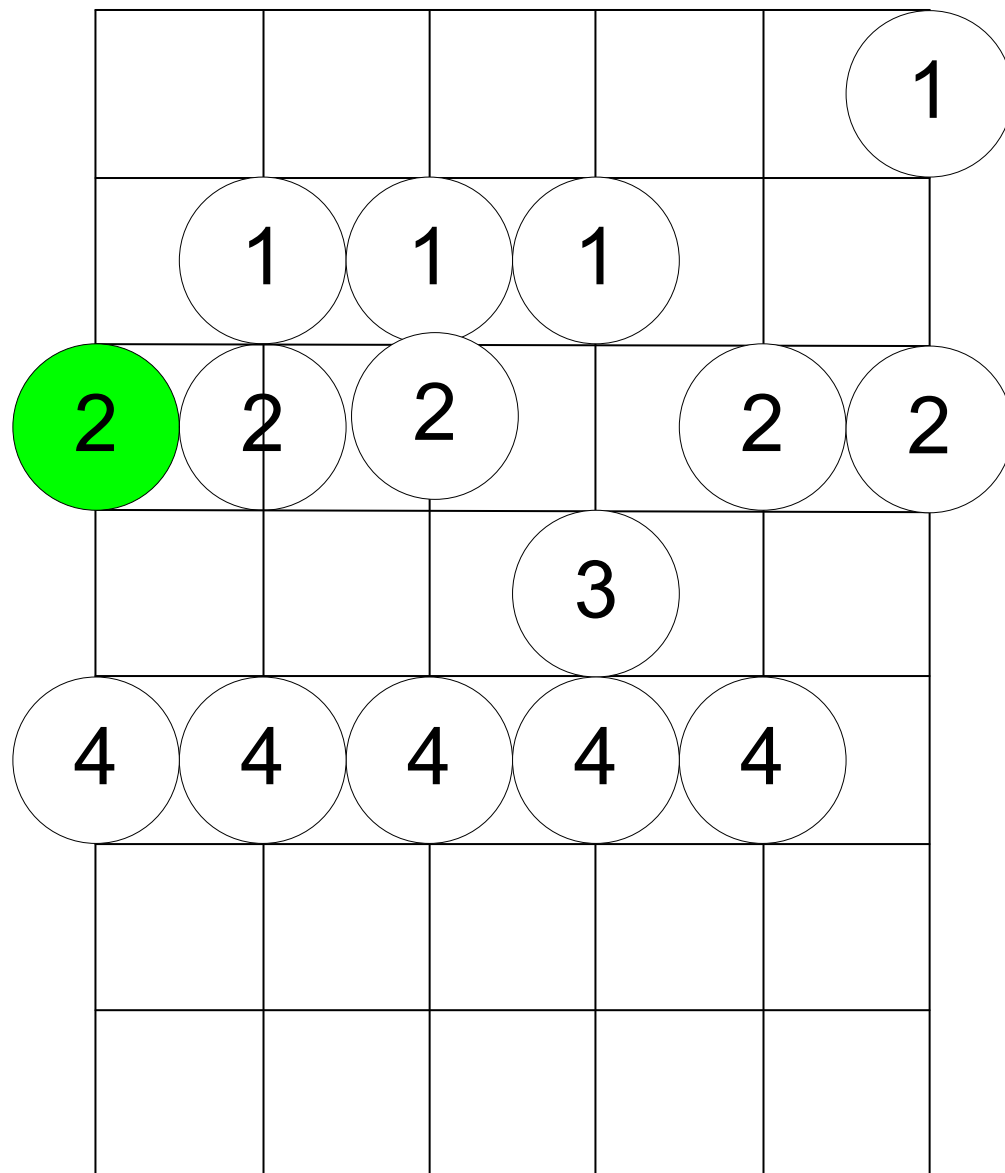
E form (G Major)



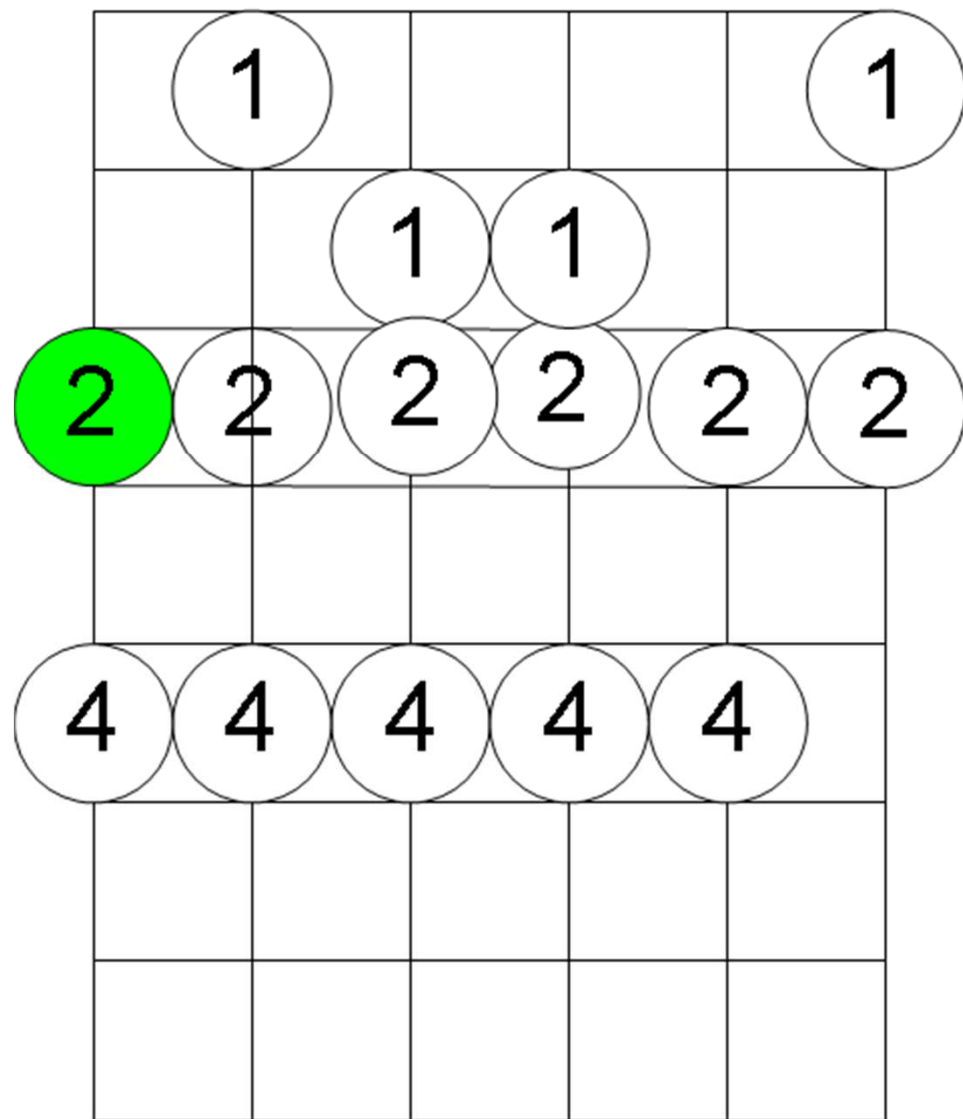
E form Melodic Minor



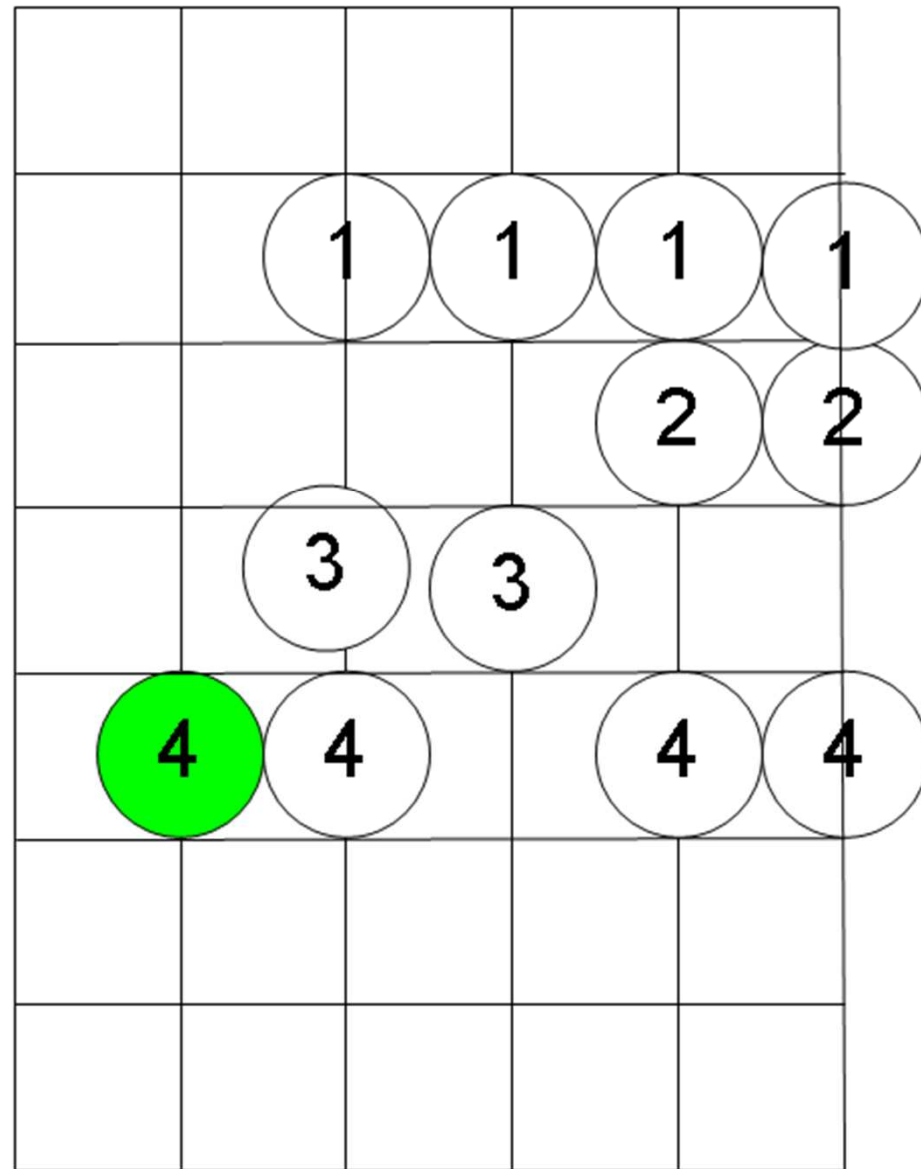
E form Mixolydian



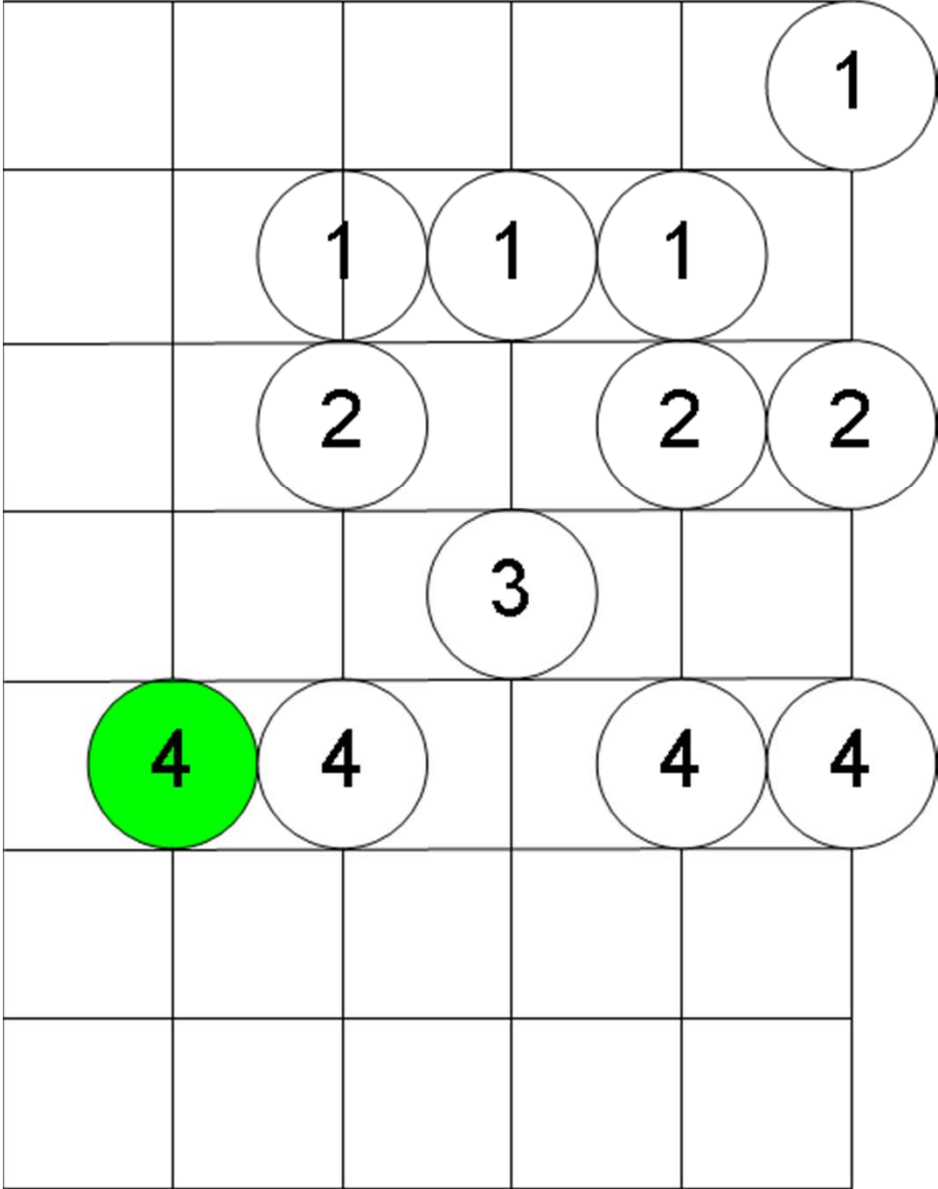
E form Dorian Mode



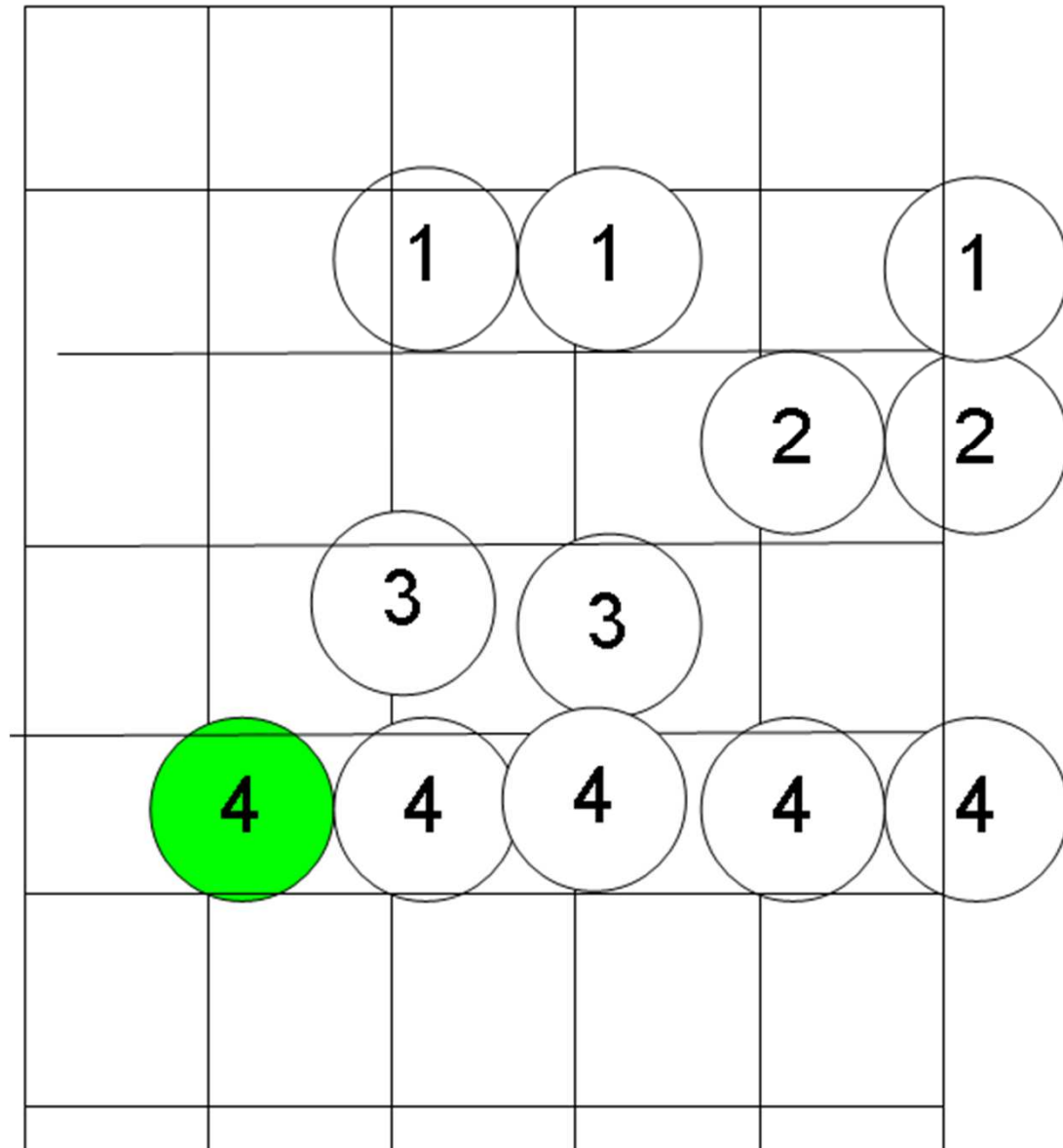
C form (D Major)



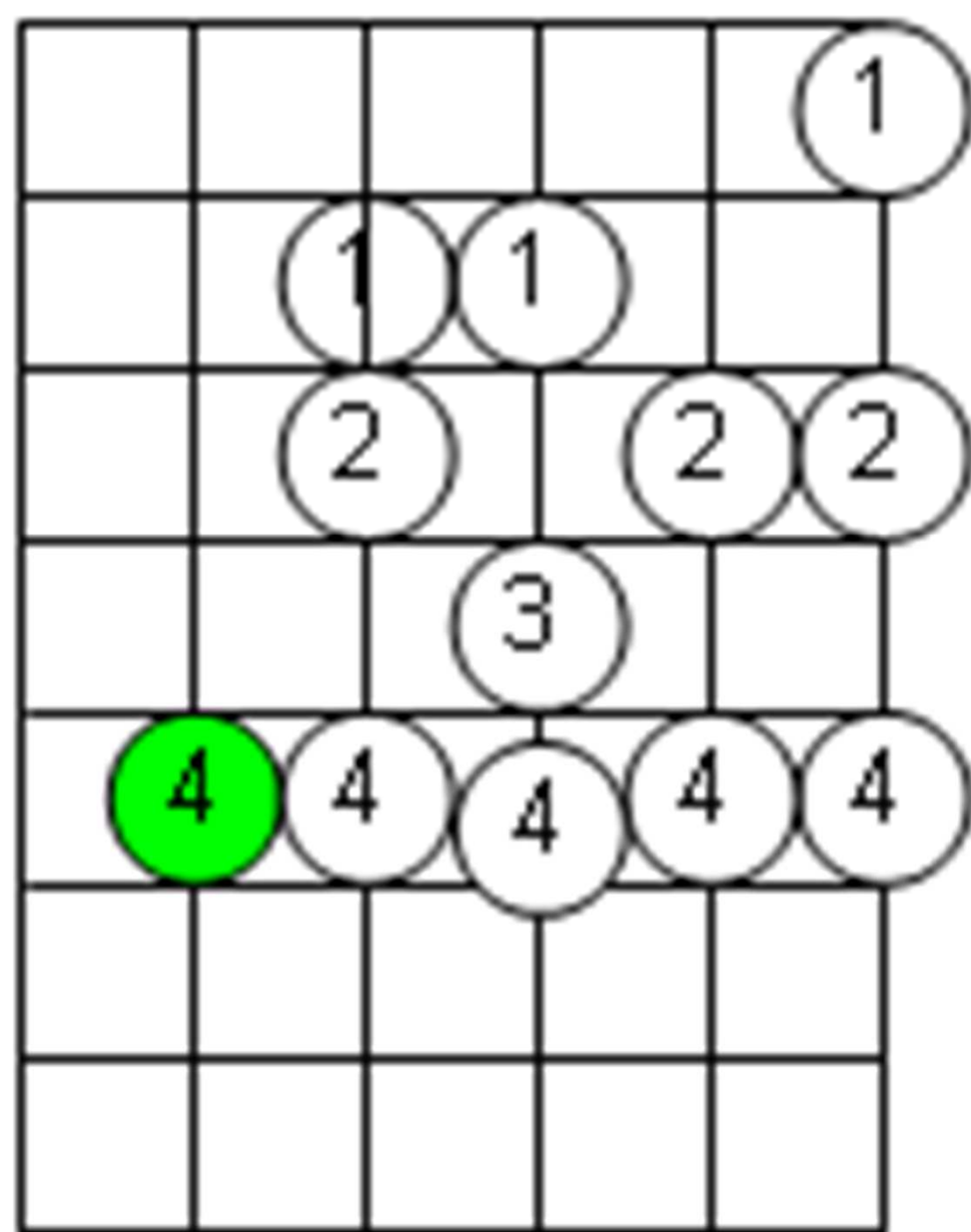
C form Melodic Minor



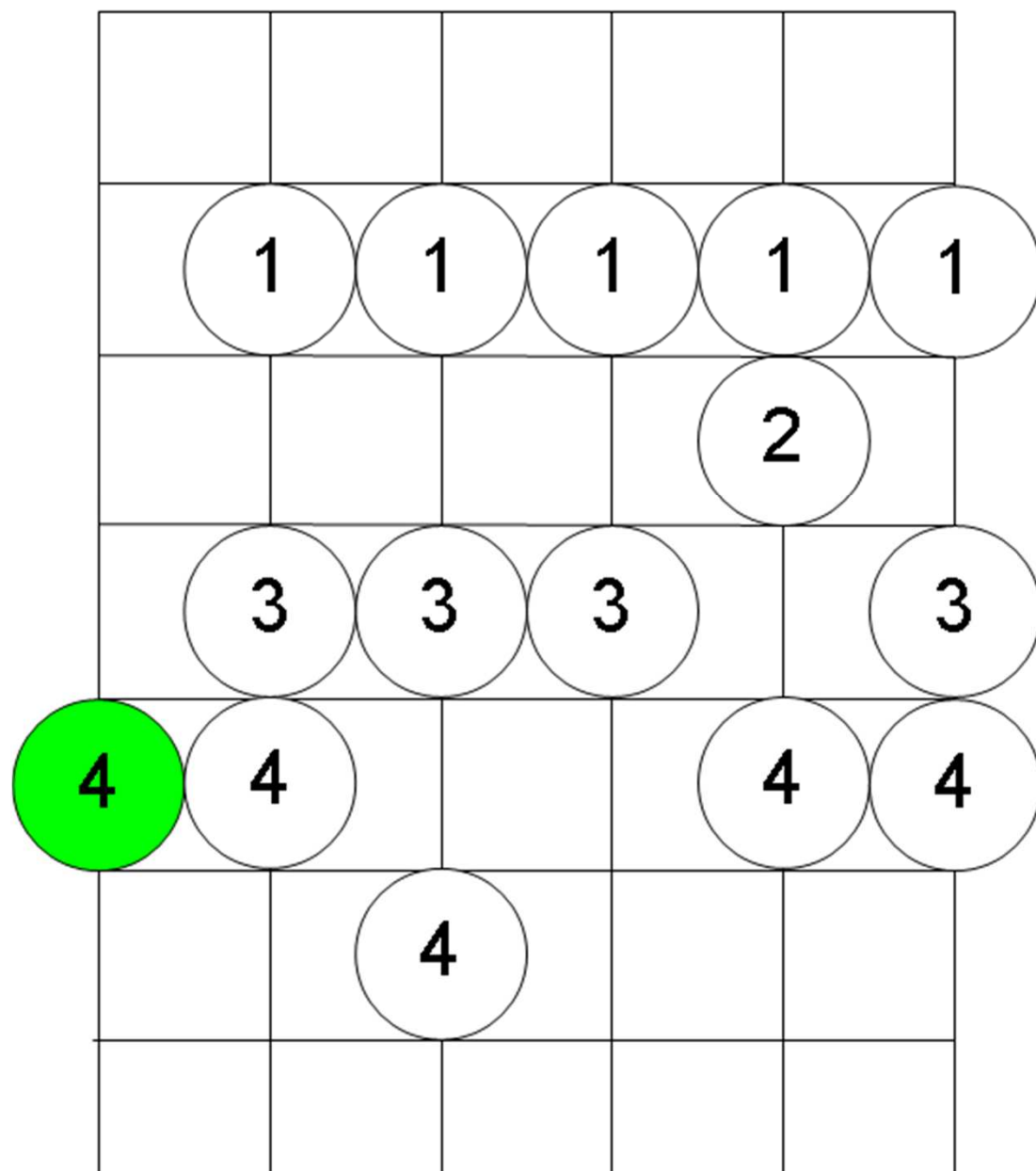
C form Mixolydian



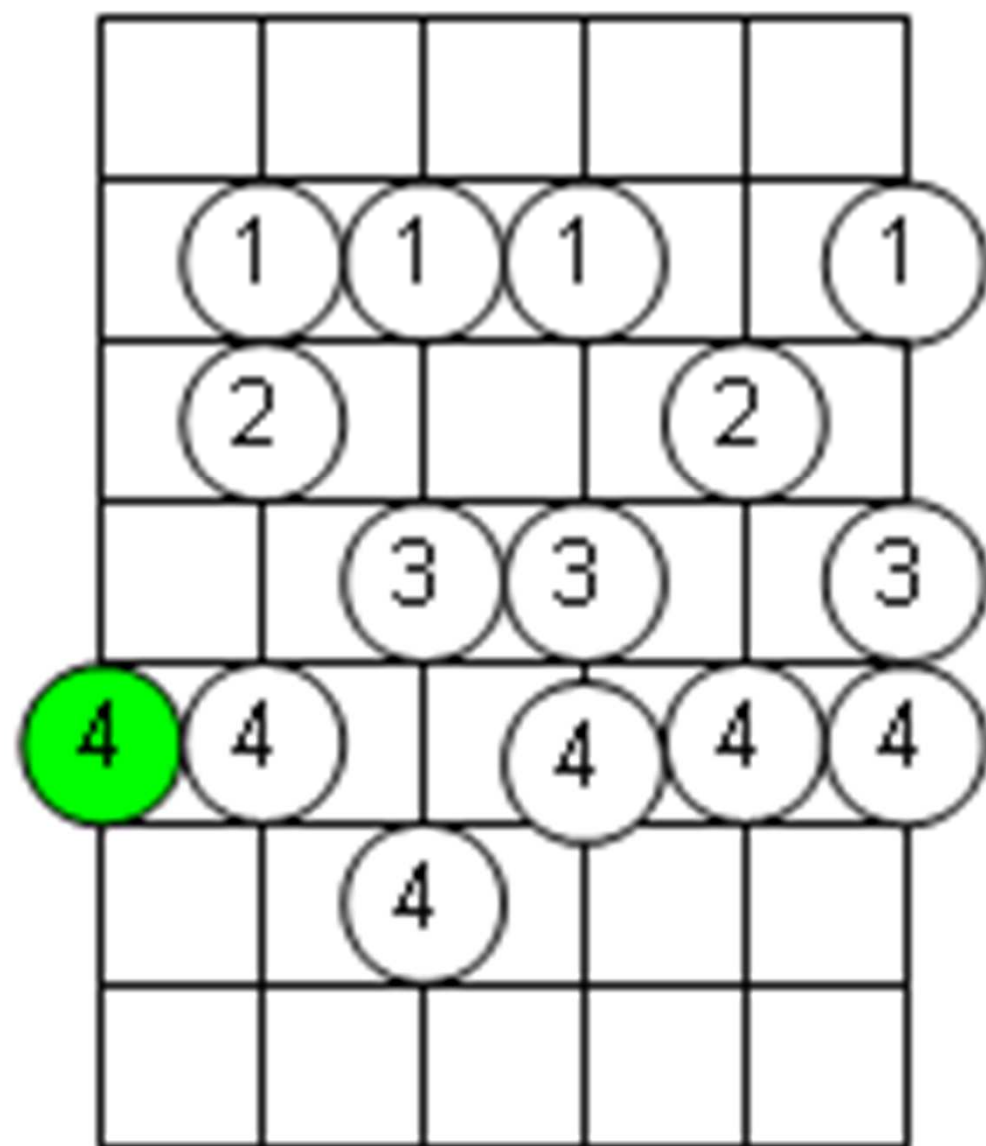
C form Dorian Mode



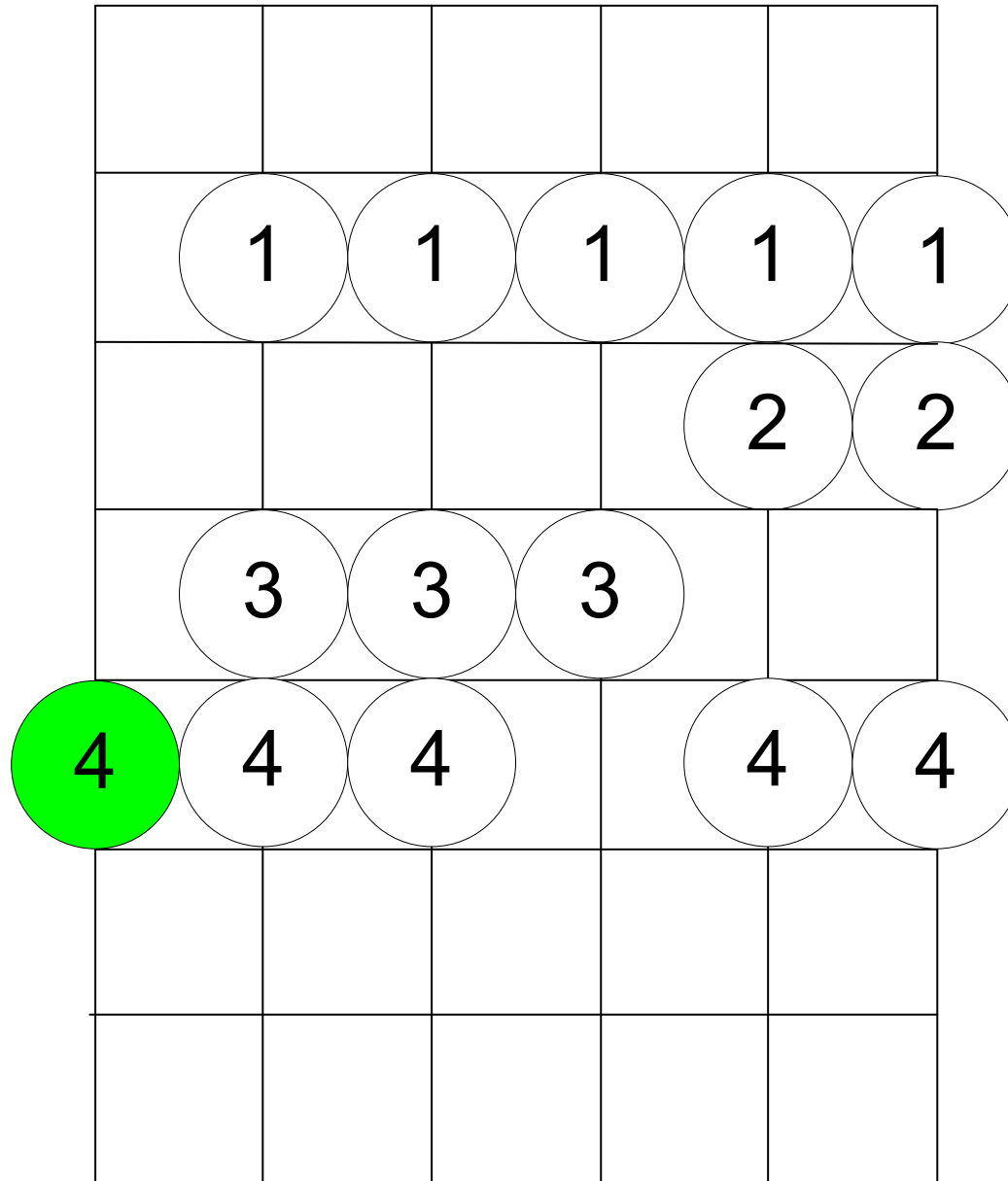
G form (A Major)



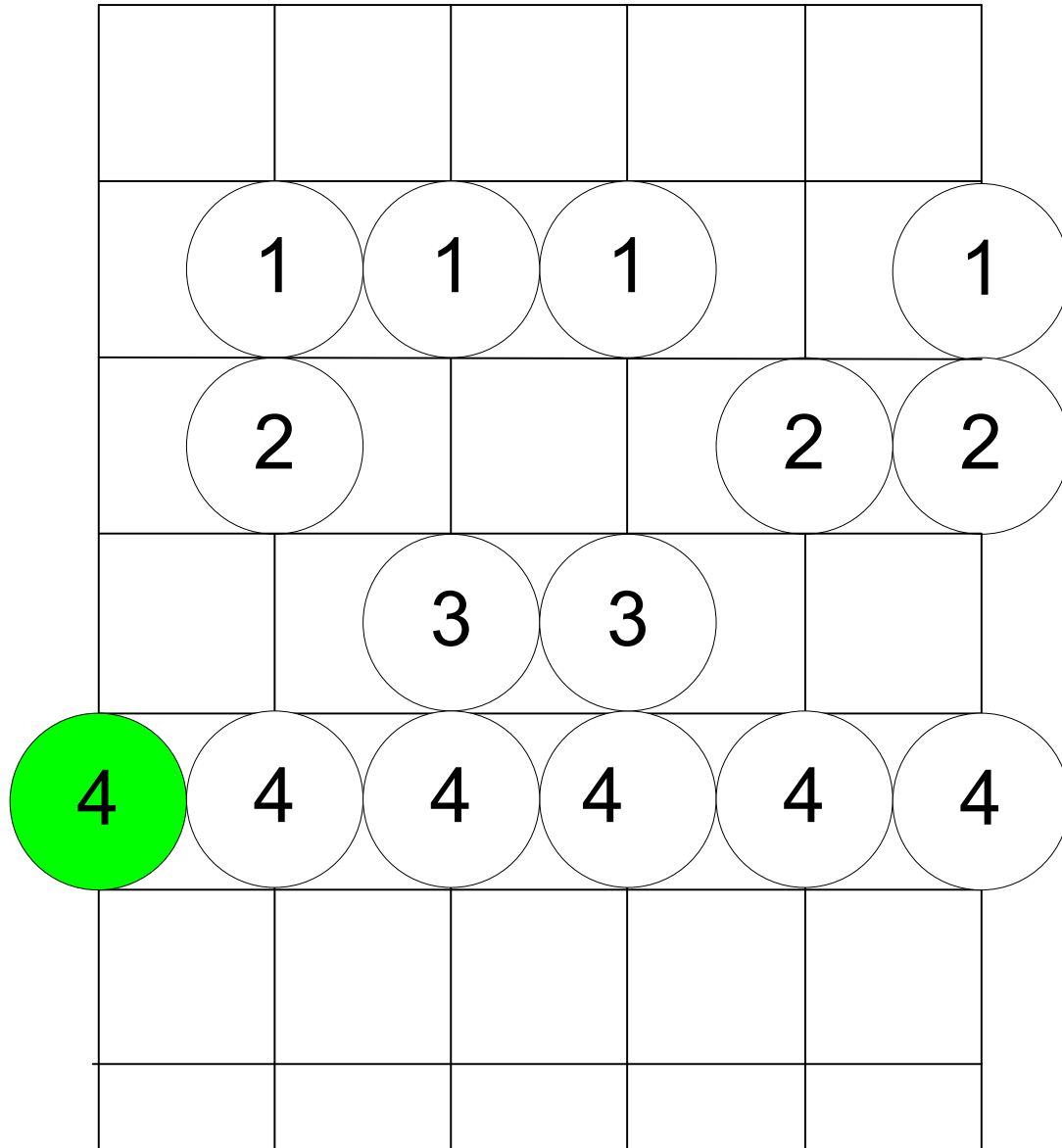
G form Melodic Minor



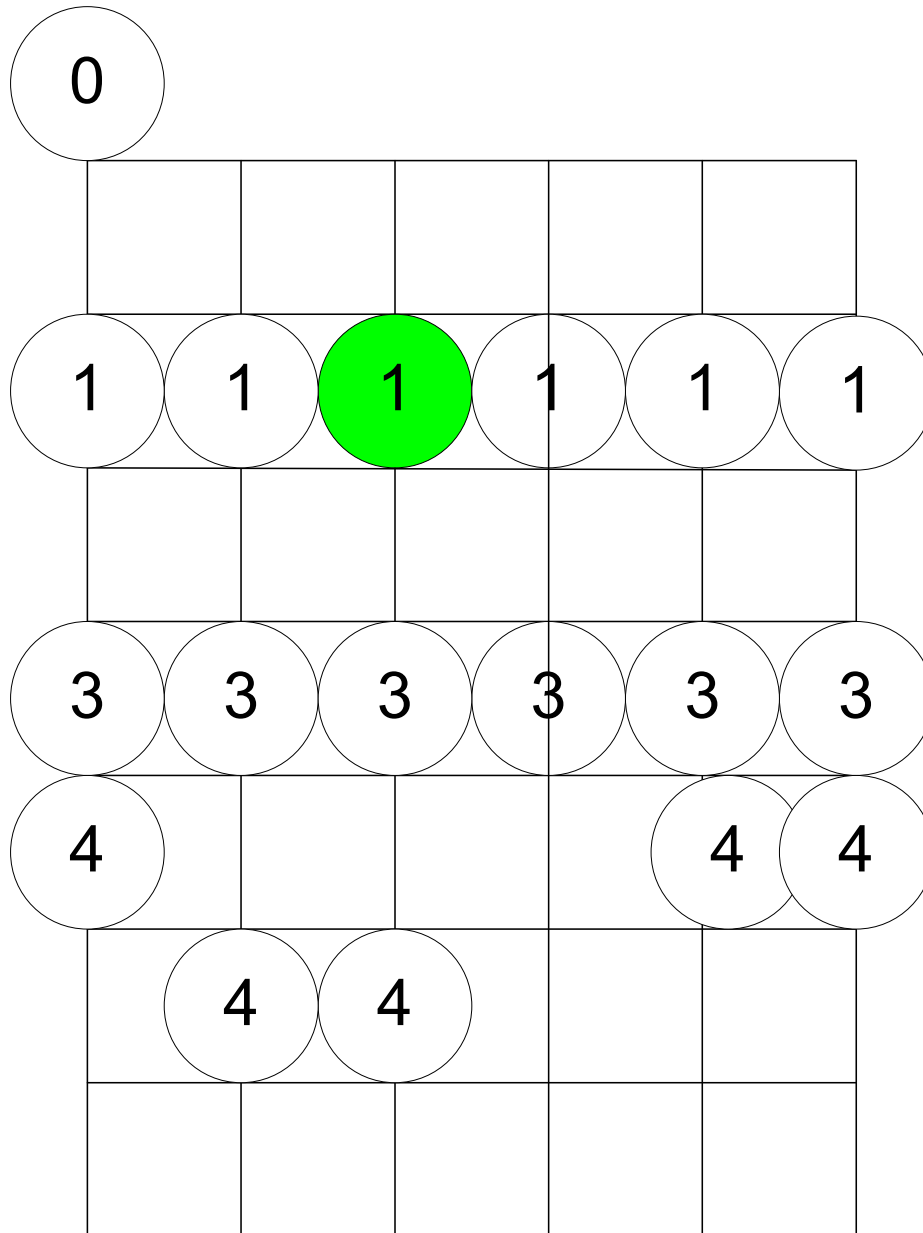
G form Mixolydian



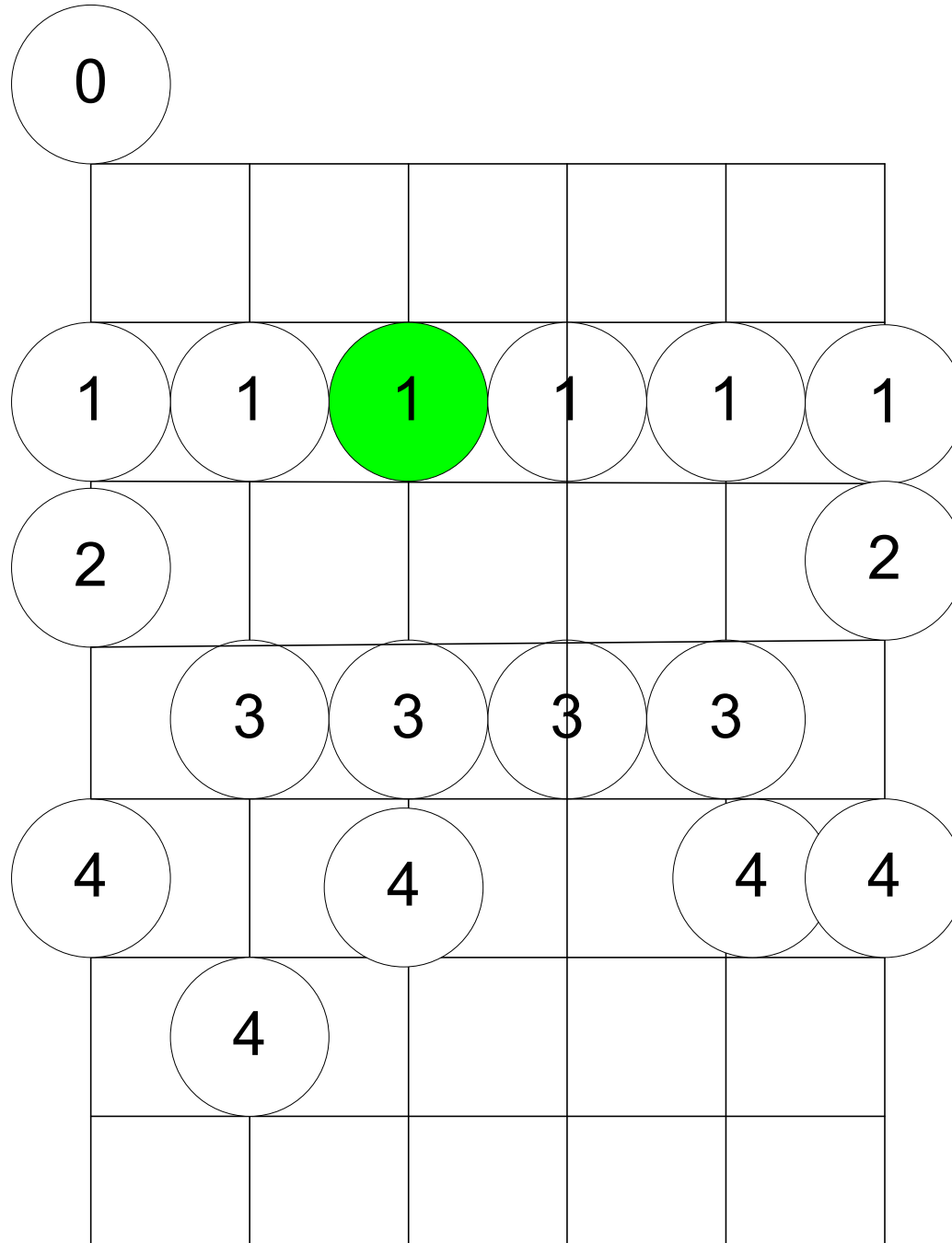
G form Dorian Mode



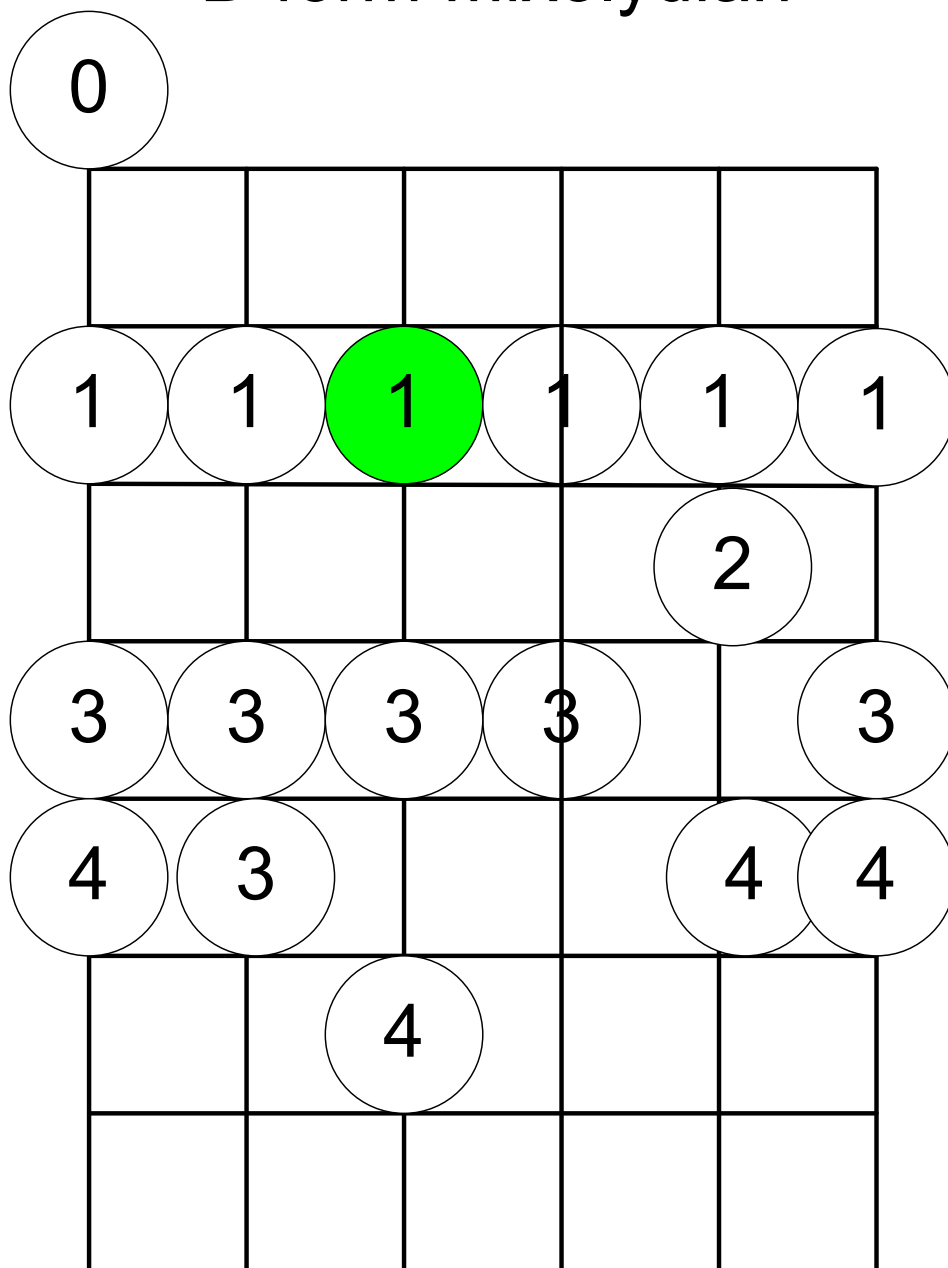
D form Major (E Major)



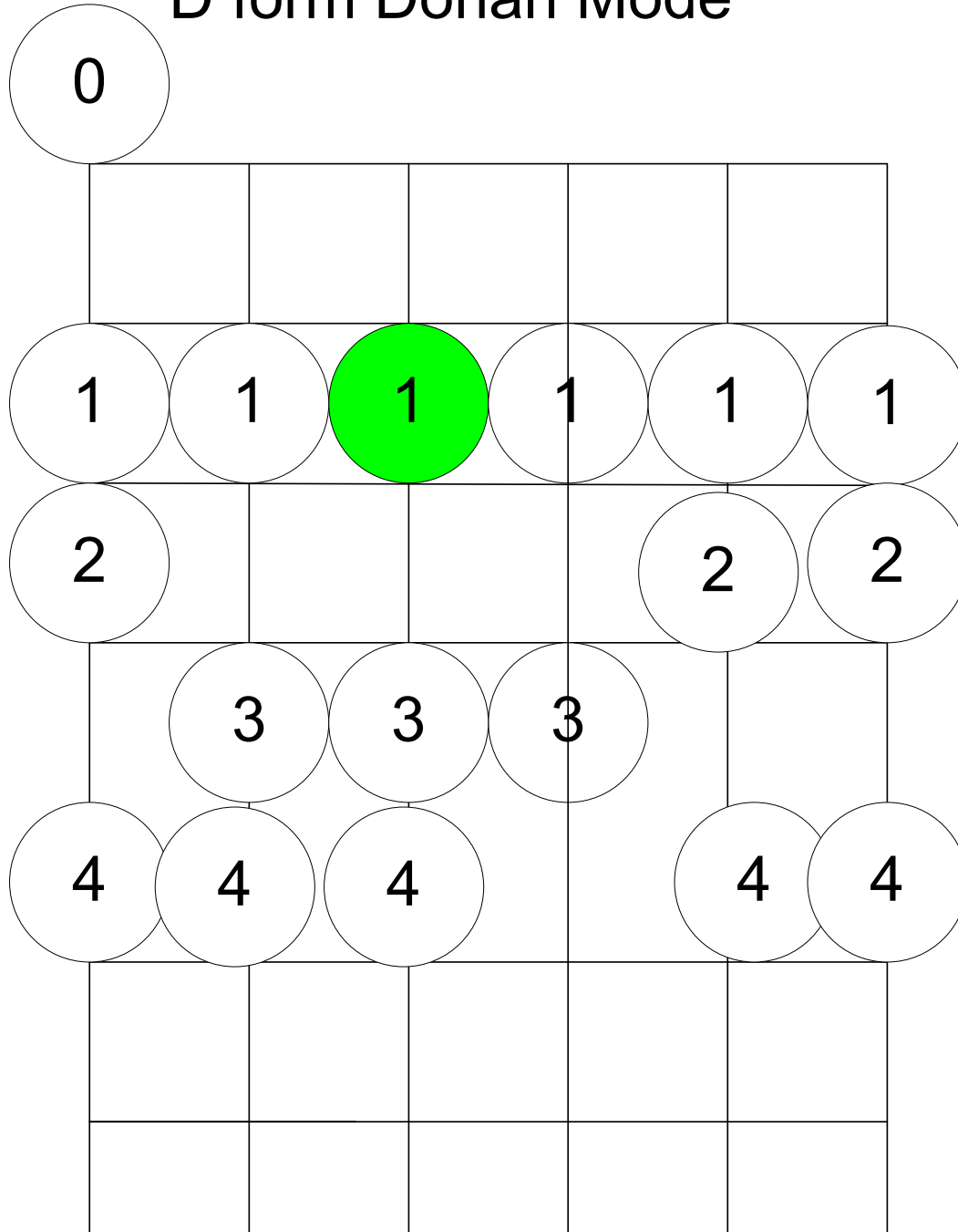
D form Melodic Minor



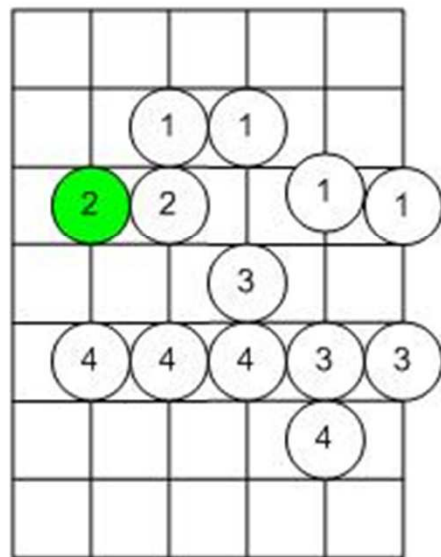
D form Mixolydian



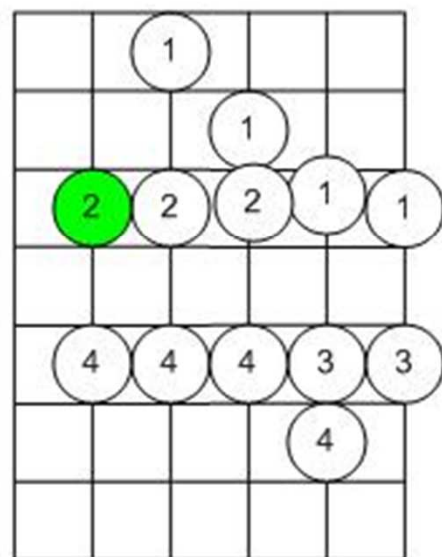
D form Dorian Mode



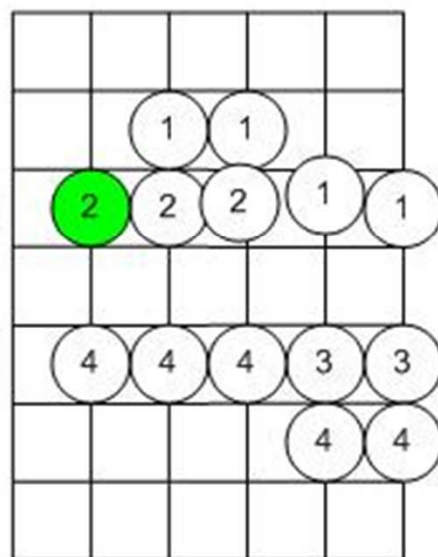
A form (C major)



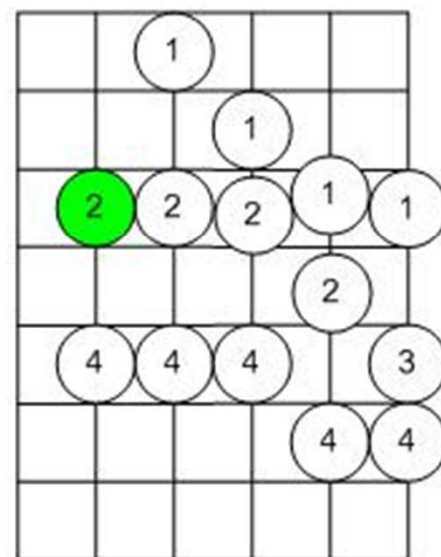
A form Melodic Minor



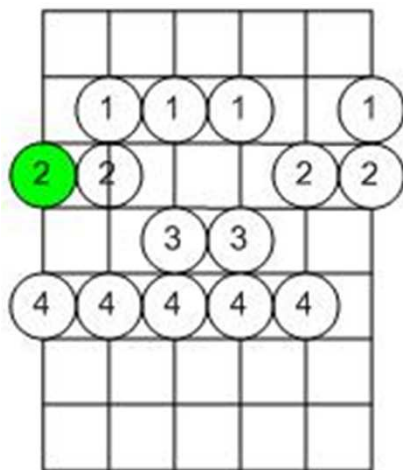
A form Mixolydian (Dom7)



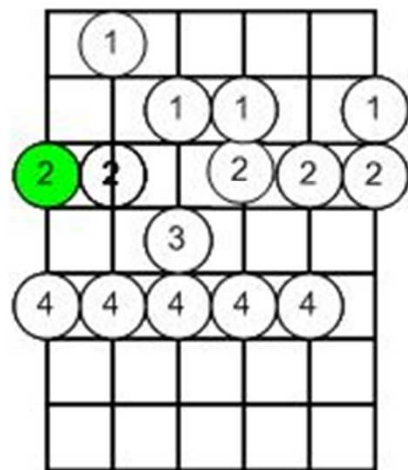
A form Dorian Mode



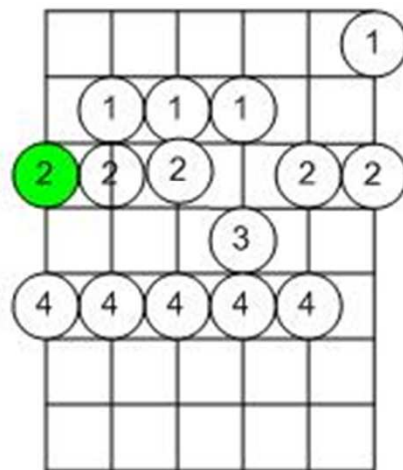
E form (G Major)



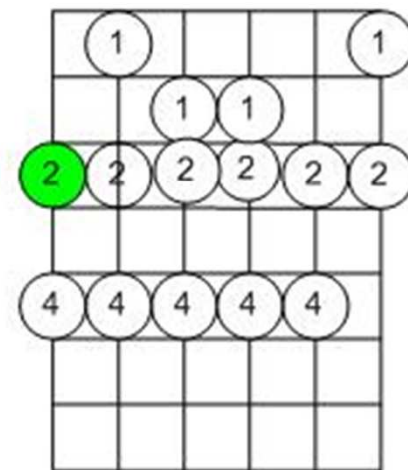
E form Melodic Minor



E form Mixolydian

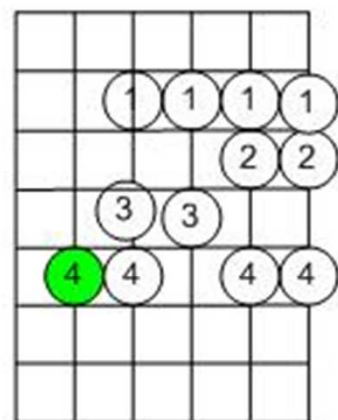


E form Dorian Mode

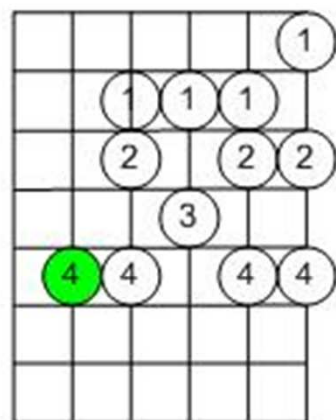


C form Mixolydian

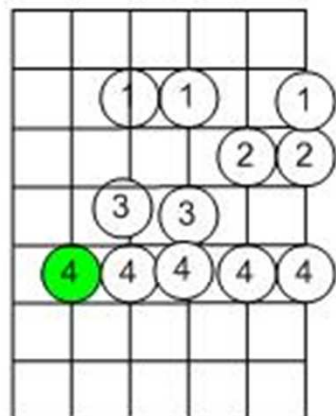
C form (D Major)



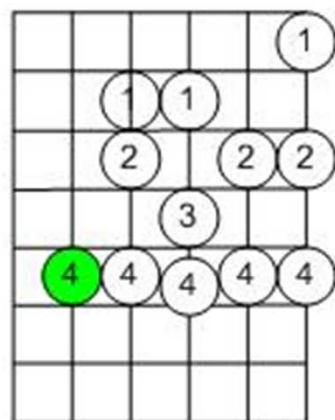
C form Melodic Minor



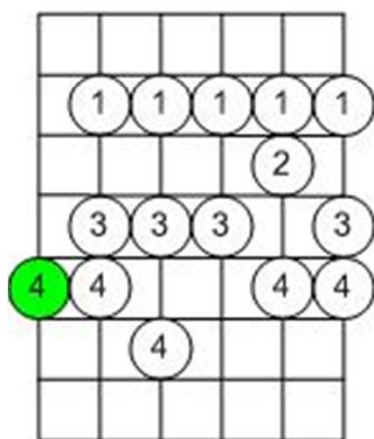
C form Mixolydian



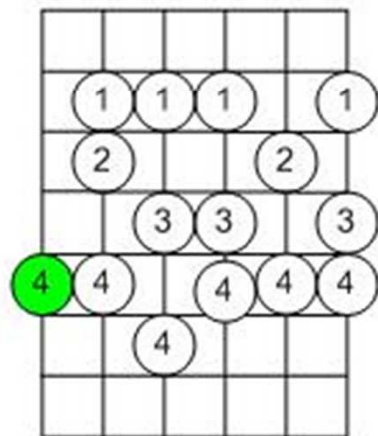
C form Dorian Mode



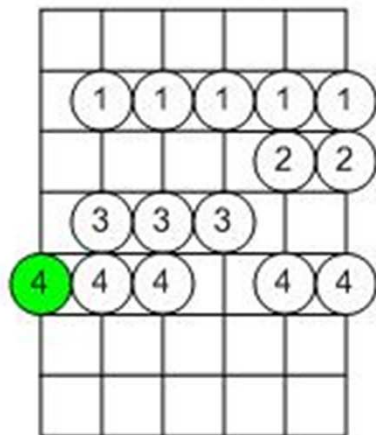
G form (A Major)



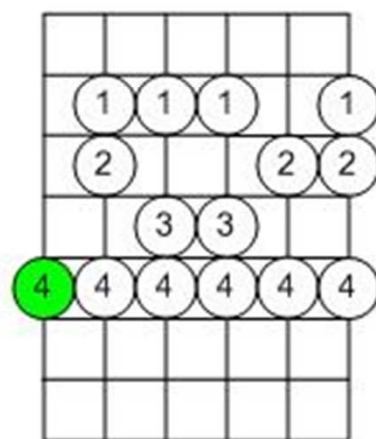
G form Melodic Minor



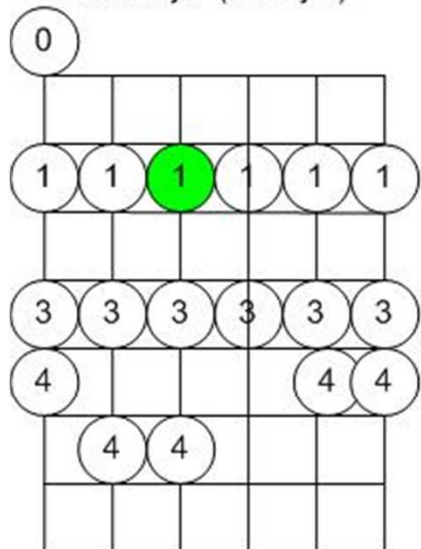
G form Mixolydian



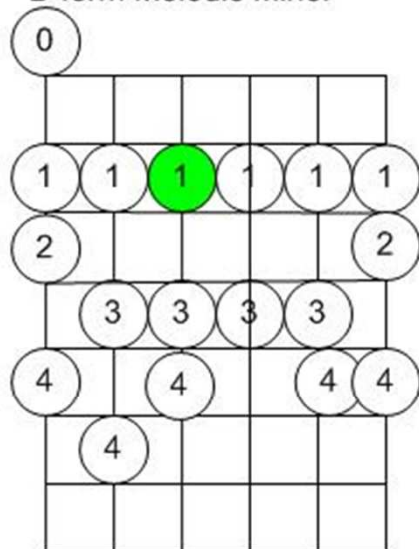
G form Dorian Mode



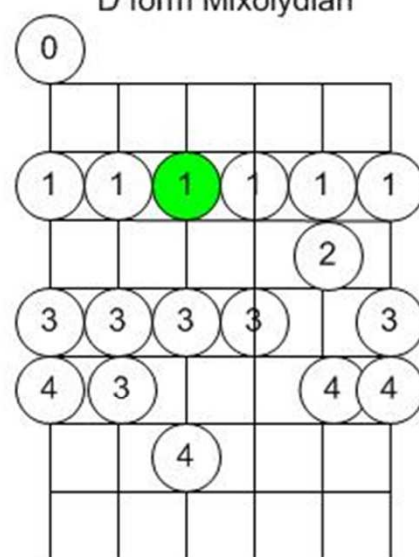
D form Major (E Major)



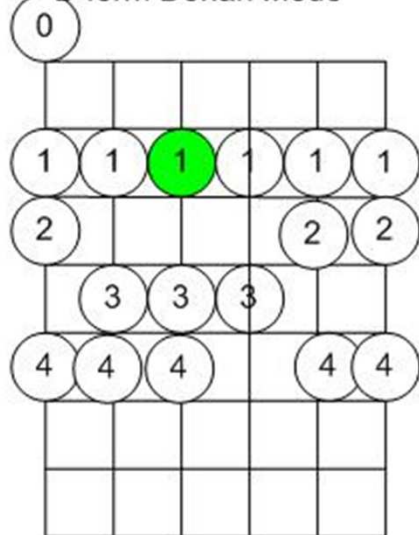
D form Melodic Minor



D form Mixolydian



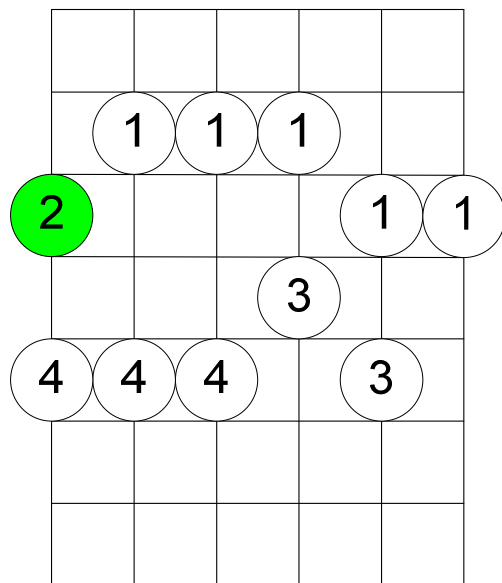
D form Dorian Mode



Note on playing up the neck. Use your first finger on the 1st 2 notes.

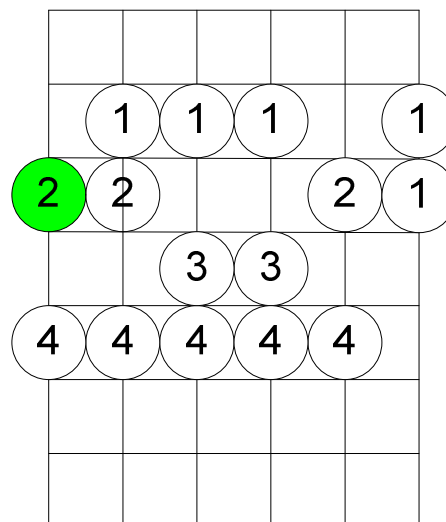
Most players use a modified fingering for the Major pentatonic scale as shown below but a fingering of 2 and 4 on the 2nd string and 2 on the 1st string is also common.

G Major Pentatonic



Note the root is on the 6th string (E form of CAGED). This is the same as the E minor Pentatonic

G Major Scale



Note the root is on the 6th string (E form of CAGED). This is the same as the E minor Pentatonic

Compare these 2 the E form and the A form.

